

Summary of Selected Grain Basis Patterns in Nebraska

**Roger Wilson, Research Analyst,
West Central Research and Extension Center
and
Lynn Lutgen, Associate Professor, Agricultural Economics**



Issued in furtherance of Cooperative Extension work, Acts of May 8 and June 30, 1914, in cooperation with the U.S. Department of Agriculture.
Elbert C. Dickey, Dean and Director of Cooperative Extension, University of Nebraska, Institute of Agriculture and Natural Resources.

University of Nebraska Cooperative Extension educational programs abide with the non-discrimination policies of the University of Nebraska-Lincoln
and the United States Department of Agriculture.

Table of Contents

Sources of basis variation	3
Corn	3
Soybeans	6
Wheat	8
Sorghum	13
Summary	14
Appendix A – Corn markets	15
Appendix B – Soybean markets	23
Appendix C – Wheat markets	30
Appendix D – Sorghum markets	34

Table of Tables

Table I. Summary of the analyses of basis variance for seasonal, annual and market effects	3
Table II. Average annual corn basis by market (\$/bu.)	4
Table III. Average annual soybean basis by market (\$/bu.)	7
Table IV. Annual average wheat basis by market (\$/bu.)	10
Table V. Average annual sorghum basis by market (\$/bu.)	13

Table of Figures

Figure 1. Nebraska 1993-2002 marketing year average corn price and basis (\$/bu.)	3
Figure 2. Comparison of Nebraska average corn basis for 1993-2002 marketing years (\$/bu.)	4
Figure 3. 1998-2002 marketing year average basis for eastern Nebraska corn markets (\$/bu.)	5
Figure 4. 1998-2002 marketing year average basis for central and western Nebraska corn markets (\$/bu.)	5
Figure 5. Nebraska 1992-2002 average soybean price and basis (\$/bu.)	6
Figure 6. Comparison of Nebraska average soybean basis for 1993-2002 marketing years (\$/bu.)	7
Figure 7. 1998-2002 marketing year average basis for east and southeast Nebraska soybean markets (\$/bu.)	8
Figure 8. 1998-2002 marketing year average basis for north and central Nebraska soybean markets (\$/bu.)	8
Figure 9. Nebraska 1992-2002 average wheat price and basis (\$/bu.)	9
Figure 10. Comparison of Nebraska average wheat basis for 1993-2002 marketing years (\$/bu.)	9
Figure 11. 1998-2002 marketing year average basis for eastern Nebraska wheat markets (\$/bu.)	10
Figure 12. 1998-2002 marketing year average basis for central Nebraska wheat markets (\$/bu.)	11
Figure 13. 1998-2002 marketing year average basis for western Nebraska wheat markets (\$/bu.)	11
Figure 14. Nebraska 1992-2002 average sorghum price and basis (\$/bu.)	12
Figure 15. Comparison of Nebraska average sorghum basis for 1993-2002 marketing years (\$/bu.)	12
Figure 16. 1998-2002 marketing year average basis for Nebraska sorghum markets (\$/bu.)	13

The commodity futures markets provide producers with additional marketing opportunities via hedging and using options. The basis is an important component in effectively evaluating these opportunities because once a hedge is set, it is the basis that will determine the actual price received. Price histories may be useful in determining reasonable basis estimates for evaluating marketing alternatives.

The University of Nebraska has collected local market data for wheat, corn, soybeans and sorghum for a number of market sites throughout Nebraska. This information is provided in an annual publication called *Basis Patterns for Selected Sites in Nebraska for Corn, Wheat, Sorghum and Soybeans*¹, which can be accessed on the Internet at <http://agecon.unl.edu/Basis/Basis.htm>. That publication and Web site contain the Thursday closing bid for a number of Nebraska market sites, the nearby futures contract price close at the appropriate futures exchange, and the difference between the two, which is the basis. The amount of data for each location varies because market sites were added and deleted over time.

This publication summarizes and analyzes that data in order to increase its usefulness to Nebraska producers. This publication includes tables in the appendices that show the average basis by month for each market. The basis in this publication was calculated by subtracting the futures market price from the local price, which generally results in the basis being a negative number. The balance of this publication looks at the variations in the basis over time and from one location to another.

Sources of basis variation

An analysis of variance was run for each commodity. The basis was the dependent variable and market location, month, and year were designated classes for the analysis. Only market sites with at least 10 years of data were included. The results are summarized in *Table I*. They show that, except for soybeans, differences between years account for more basis variability than seasonal movements or market site. Year-to-year differences accounted for over half the basis variation for both wheat and sorghum. Since storage and transportation costs ordinarily do not vary much from one year to the next, this indicates that there were other factors in the marketplace that contributed substantially to determining the basis.

Difference between market sites was the largest source of variation for soybeans. Soybean market sites were unique in the fact that one market site, Wayne, consistently had a wider basis and another, Omaha, consistently had a narrower basis than the other soybean market sites.

Corn

Corn basis data is available for 24 Nebraska market sites. Eight of these market sites have data for 10 or more years. Nineteen of these market sites have data for five or more years. None of the data from the market sites with less than five years of data was used for any analysis.

Figure 1 shows the average Nebraska price and basis for the past 10 years and the nearby month Chicago Board of Trade (CBOT) corn close. High corn prices occurred in

Table I. Summary of the analyses of basis variance for seasonal, annual and market site effects

Source	Corn	Soybeans	Wheat	Sorghum
Month	6%	10%	8%	5%
Year	34%	16%	64%	51%
Market	3%	17%	3%	5%
Model	42%	43%	75%	61%

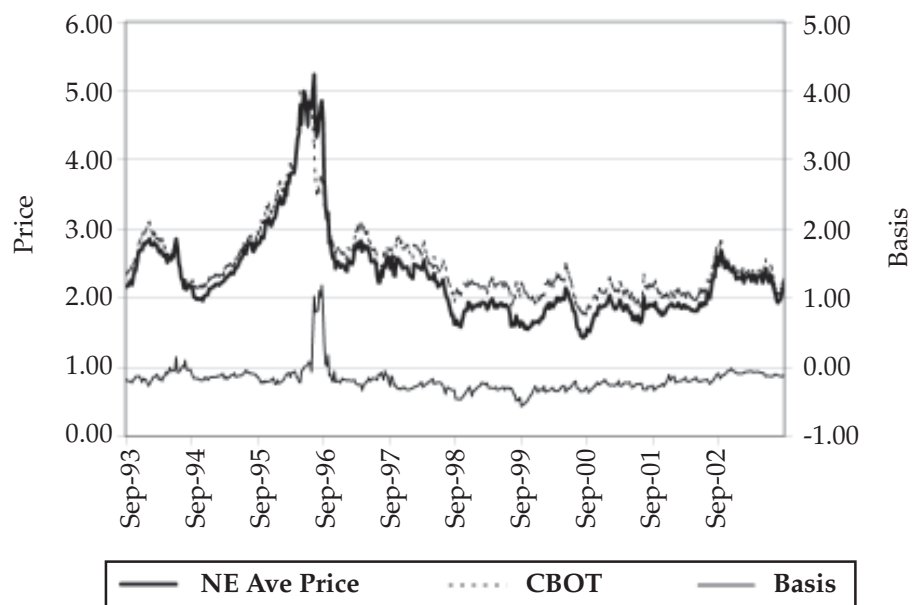


Figure 1. Nebraska 1993-2002 marketing year average corn price and basis (\$/bu.)

¹Lutgen, Lynn H. and Diane Wasser, *Basis Patterns for Selected Sites in Nebraska for Corn, Wheat, Sorghum and Soybeans*, EC02-893, University of Nebraska Cooperative Extension, Annual Publication.

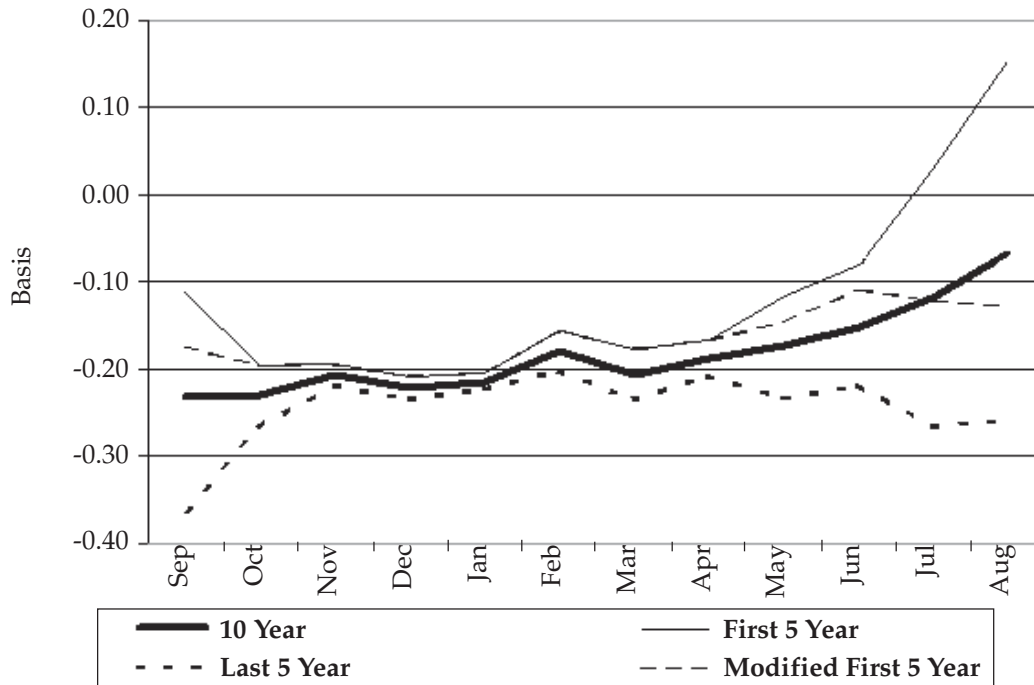


Figure 2. Comparison of Nebraska average corn basis for 1993-2002 marketing years (\$/bu.)

Nebraska beginning the summer of 1996 and continuing through the 1996 harvest. During part of this time, prices were higher in Nebraska than in Chicago, causing a positive basis. The positive basis reached \$1.20 per bushel, which was over twice the magnitude of the maximum negative basis of \$0.53 per bushel. A possible reason for this large positive basis was that in 1995 corn production in Nebraska and the nation was less than three-fourths that of the previous year. This illustrates that abnormal

situations may impact the basis in ways that limit the value of historical price data for estimating a future basis for a given time.

Abnormal disruptions in transportation services may also impact the basis for a given period. An example of this occurred in 1997 when Union Pacific and Southern Pacific rail lines merged. This merger caused rail shipments to be disrupted and delayed throughout the west until 1998.² This analysis makes no attempt to measure the impact of this unique

situation, but producers using historical data to make marketing decisions should be aware of it.

Figure 2 shows the average basis for the first and last five-year period as well as the 10-year average for each month of the 1993-2002 marketing years. The average July and August basis for the first five-year

²Railroad Regulation: Changes in Freight Railroad Rates from 1997 to 2000. United States General Accounting Office report number GAO-02-524 dated June 28, 2002. (<http://www.gao.gov/atext/d02524.txt>)

Table II. Average annual corn basis by market (\$/bu.)

Market	1993	1994	1995	1996	1997	1998	1999	2000	2001	2002
Beatrice	-0.14	-0.19	0.04	-0.14	-0.25	-0.37	-0.36	-0.26	-0.22	-0.09
Brule				-0.17	-0.29	-0.44	-0.42	-0.25	-0.22	-0.05
Columbus				-0.19	-0.26	-0.34	-0.33	-0.25	-0.20	-0.10
Duncan				-0.20	-0.27	-0.35	-0.34	-0.24	-0.20	-0.10
Elm Creek	-0.10	-0.08	0.07	-0.14	-0.24	-0.29	-0.29	-0.23	-0.17	-0.06
Fremont	-0.14	-0.17	-0.25	-0.17	-0.29	-0.36	-0.37	-0.31	-0.22	-0.15
Greenwood	-0.15	-0.19	0.02	-0.20	-0.30	-0.38	-0.40	-0.30	-0.25	-0.15
Grand Island	-0.11	-0.12	0.12	-0.14	-0.25	-0.31	-0.32	-0.24	-0.19	-0.08
Holdrege				-0.22	-0.27	-0.34	-0.32	-0.23	-0.19	-0.08
Lexington	-0.05	-0.09	0.08	-0.14	-0.24	-0.29	-0.29	-0.22	-0.16	-0.07
Manley				-0.23	-0.30	-0.37	-0.39	-0.30	-0.25	-0.14
Murdock				-0.23	-0.30	-0.38	-0.40	-0.30	-0.25	-0.14
Ogallala				-0.26	-0.29	-0.44	-0.43	-0.25	-0.22	-0.05
Omaha	-0.09	-0.08		-0.13	-0.20	-0.27	-0.29	-0.24	-0.18	-0.09
Osceola	-0.10	-0.12	0.04	-0.12	-0.27	-0.35	-0.34	-0.24	-0.20	-0.10
Silver Creek	-0.18			-0.14	-0.24	-0.29	-0.31	-0.23	-0.19	-0.09
Superior	-0.03	-0.03	0.08	-0.13	-0.25	-0.30	-0.33	-0.25	-0.17	-0.05
Tarnov				-0.20	-0.27	-0.35	-0.34	-0.25	-0.20	-0.10
Waverly	-0.15	-0.19	0.03	-0.19	-0.30	-0.40	-0.39	-0.30	-0.24	-0.13

period was positive because of the large positive basis in 1996. A modified first five-year average line was added which deletes the prices from May through September 1996 to provide some idea of the effect of this huge positive basis. It is called the amended first five-year average.

All the averages had similar patterns from November through April. Even after the first five-year average was amended, there were obvious differences between it and

the last five-year average from April through November.

Table II shows the annual average corn basis by market for the marketing years 1993 through 2002. The 2002 marketing year ended August 31, 2003. The narrowest basis when all market sites in Nebraska were averaged was a positive three cents per bushel in 1995 and the widest was a negative 35 cents per bushel in 1998 and 1999. This table shows that no one market always

had the widest basis nor did any one always have the narrowest. Both Brule and Ogallala tied for having the widest basis in 1998 and the narrowest in 2002. This illustrates that the year-to-year basis fluctuations impact some markets more than others, making them even more difficult for a producer in a specific location to reliably forecast.

Figures 3 and 4 graph monthly averages for individual market sites over the past five years. Some market

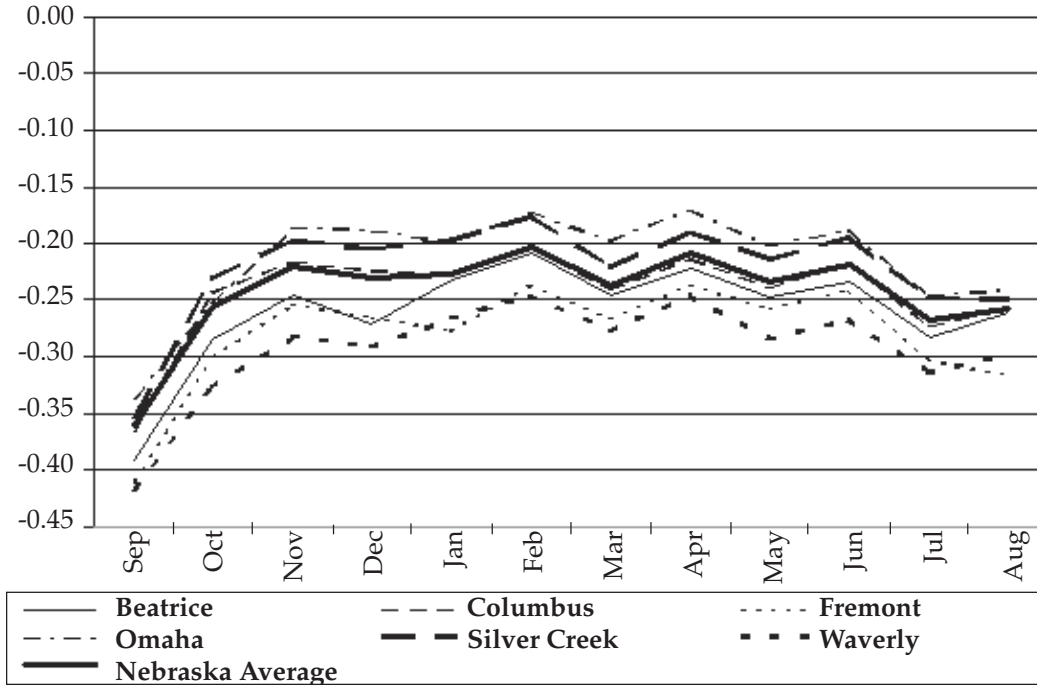


Figure 3. 1998-2002 marketing year average basis for eastern Nebraska corn markets (\$/bu.)

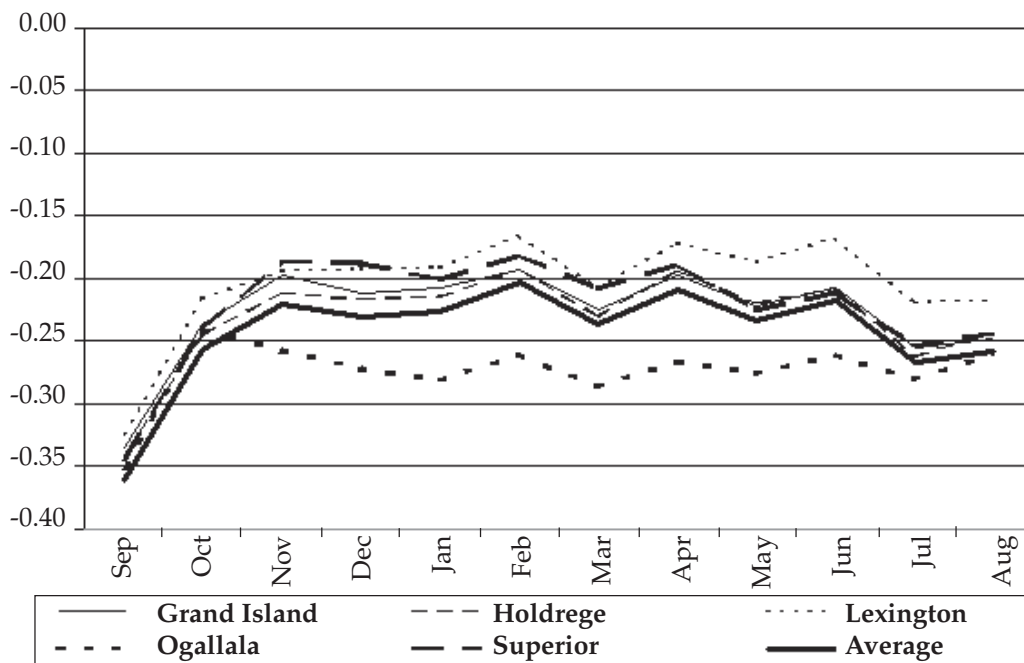


Figure 4. 1998-2002 marketing year average basis for central and western Nebraska corn markets (\$/bu.)

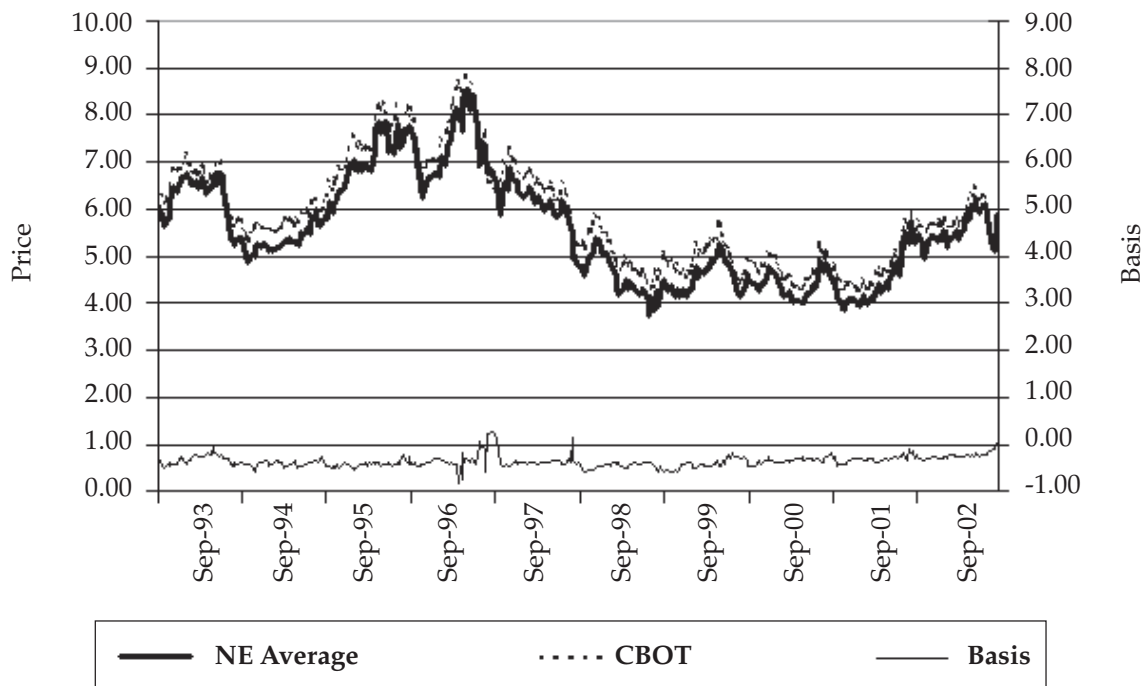


Figure 5. Nebraska 1992-2002 average soybean price and basis (\$/bu.)

sites are not included in these graphs because they are located near a market that had nearly identical prices so are represented by it. Duncan, Elm Creek and Osceola were represented by Columbus; Greenwood, Manley and Murdock by Waverly; Brule by Ogallala; and Elm Creek by Lexington.

The general pattern that emerged from these graphs was the average corn basis in Nebraska narrowed from harvest through November. The basis for most market sites paralleled the Nebraska average. Ogallala (Figure 4) appeared to be the most obvious exception as its basis moved similar to the average through October but then did not continue to narrow as did the average Nebraska basis. As harvest approached and the average Nebraska basis began to widen, it moved closer to the Ogallala basis.

The pattern of the basis at Lexington (Figure 4) also varied from the pattern of the Nebraska average basis. It paralleled the Nebraska average basis most of the year but remained narrow when the Nebraska average basis began widening in May. The Lexington basis remained narrow until July when it also began to widen.

Soybeans

Soybean basis data is available for 20 market sites in Nebraska. Thirteen of these market sites have data going back over 10 years, but because of data skips, only 11 market sites were used for the 10-year analysis. Seventeen market sites have data for five or more years.

Figure 5 shows the average Nebraska Thursday soybean price and basis and the CBOT nearby month Thursday soybeans close. Overall, the average Nebraska soybean basis appeared relatively stable throughout most of this 10-year period, but there were times when basis fluctuation was very noticeable but obviously smaller than price movements. The largest basis movements roughly coincided with the Union Pacific – Southern Pacific merger-induced transportation problems discussed in the corn analysis.

The monthly Nebraska average soybean basis for the first five years and the last five years of the 1993-2002 marketing years, along with the 10-year average, are graphed in Figure 6. Seasonal patterns were similar for all three periods, suggesting the basis patterns were stable over time. The basis was widest in

October with an average in the mid \$0.40 per bushel. It narrowed nearly 10 cents per bushel from October to December. It gradually continued to narrow from March until July or August before rapidly widening at harvest.

Table III shows the annual average soybean basis by market for up to 10 years for market sites with at least five years of data. The narrowest basis when all market sites in Nebraska were averaged was a negative 24 cents per bushel in 2002 and the widest was a negative 45 cents per bushel in 1998. Omaha consistently had the narrowest basis while Wayne, except for one year, had the widest basis. When these two market sites were excluded from the analysis, there was no market that always had the widest or narrowest basis. In fact, when Omaha and Wayne were excluded from the analysis, four market sites that had the widest basis one year had the narrowest basis another. Excluding the Omaha and Wayne market sites, the difference between the narrowest and widest annual average basis was less than 10 cents per bushel for each of the last five years and was only four cents per bushel in 2002.

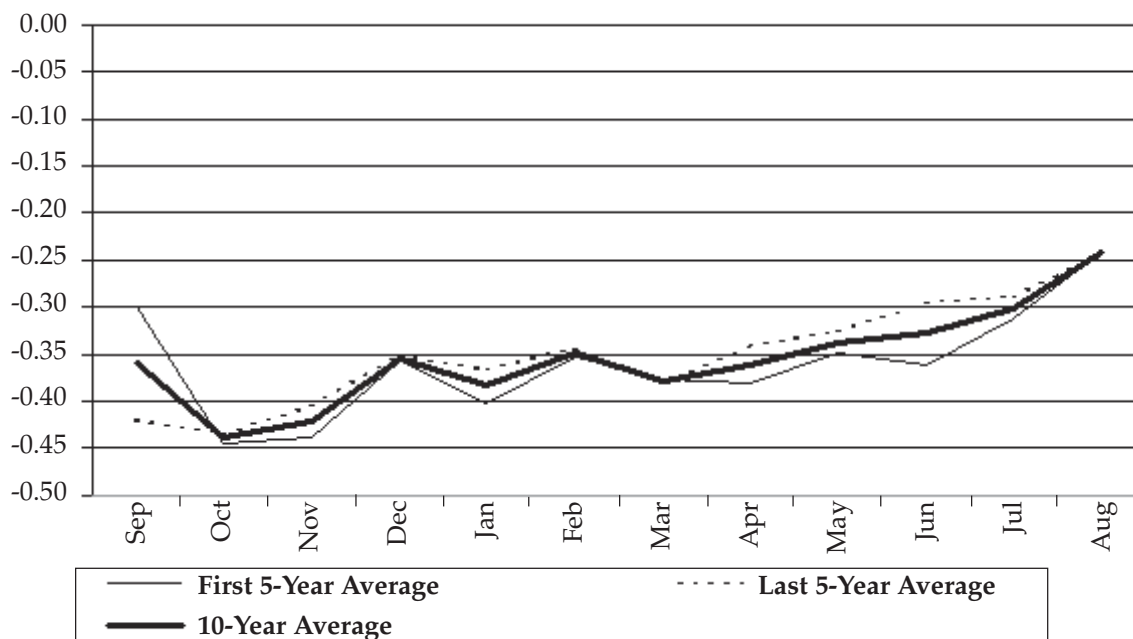


Figure 6. Comparison of Nebraska average soybean basis for 1993-2002 marketing years (\$/bu.)

Table III. Average annual soybean basis by market (\$/bu.)

Market	1993	1994	1995	1996	1997	1998	1999	2000	2001	2002
Beatrice	-0.32	-0.39	-0.45	-0.35	-0.41	-0.46	-0.42	-0.34	-0.32	-0.23
Columbus	-0.29	-0.40	-0.44	-0.29	-0.36	-0.43	-0.40	-0.33	-0.32	-0.25
Duncan		-0.24	-0.34	-0.43	-0.40	-0.33	-0.32	-0.25		
Fremont	-0.26	-0.31	-0.28	-0.27	-0.30	-0.45	-0.43	-0.32	-0.29	-0.21
Grand Island	-0.32	-0.40	-0.47	-0.33	-0.37	-0.43	-0.38	-0.31	-0.29	-0.23
Greenwood	-0.31	-0.43	-0.41	-0.29	-0.33	-0.45	-0.43	-0.34	-0.33	-0.25
Holdrege				-0.37	-0.44	-0.49	-0.43	-0.34	-0.31	-0.24
Lexington	-0.34	-0.46	-0.47	-0.42	-0.46	-0.51	-0.42	-0.35	-0.32	-0.23
Manley				-0.25	-0.33	-0.45	-0.43	-0.34	-0.33	-0.25
Murdock				-0.25	-0.33	-0.45	-0.43	-0.34	-0.33	-0.25
Omaha	-0.21	-0.25	-0.28	-0.13	-0.17	-0.27	-0.27	-0.17	-0.15	-0.07
Osceola	-0.29	-0.40	-0.43	-0.37	-0.34	-0.43	-0.41	-0.33	-0.31	-0.25
Plymouth	-0.31	-0.42	-0.47	-0.32	-0.33		-0.42	-0.34	-0.28	-0.23
Silver Creek	-0.38			-0.24	-0.37	-0.42	-0.41	-0.32	-0.29	-0.22
Superior	-0.32	-0.39	-0.42	-0.39	-0.35	-0.46	-0.41	-0.36	-0.31	-0.23
Tornov				-0.29	-0.35	-0.44	-0.42	-0.34	-0.33	-0.25
Waverly	-0.31	-0.42	-0.41	-0.29	-0.30	-0.45	-0.42	-0.34	-0.33	-0.25
Wayne	-0.46	-0.55	-0.55	-0.44	-0.42	-0.56	-0.56	-0.48	-0.47	-0.44

Figures 7 and 8 show how the average monthly basis for individual market sites compare. Figure 7 includes Columbus and the market sites located south and east of it. Figure 8 includes Wayne and the market sites located west of Columbus. Duncan, Greenwood, Manley, Murdock, Osceola, Silver Creek and Tarnov were not included in either graph. Duncan, Osceola, Silver Creek and Tarnov are located geographically very close to Colum-

bus and their bases were very similar. Likewise, Greenwood, Manley and Murdock are located geographically close to Waverly and their bases were very similar.

Figure 7 shows the basis patterns for market sites in east and southeast Nebraska, for the most part, paralleled the Nebraska average basis. Omaha had the narrowest basis and Fremont's basis was noticeably narrower than the Nebraska average.

Figure 8 shows considerably more basis variation than Figure 7. Wayne had the widest basis. Holdrege had the second widest basis until May when it began narrowing faster than the Nebraska average and became narrower than the Nebraska average by July. This graph illustrates that area averages may not provide satisfactory basis projections for individual markets.

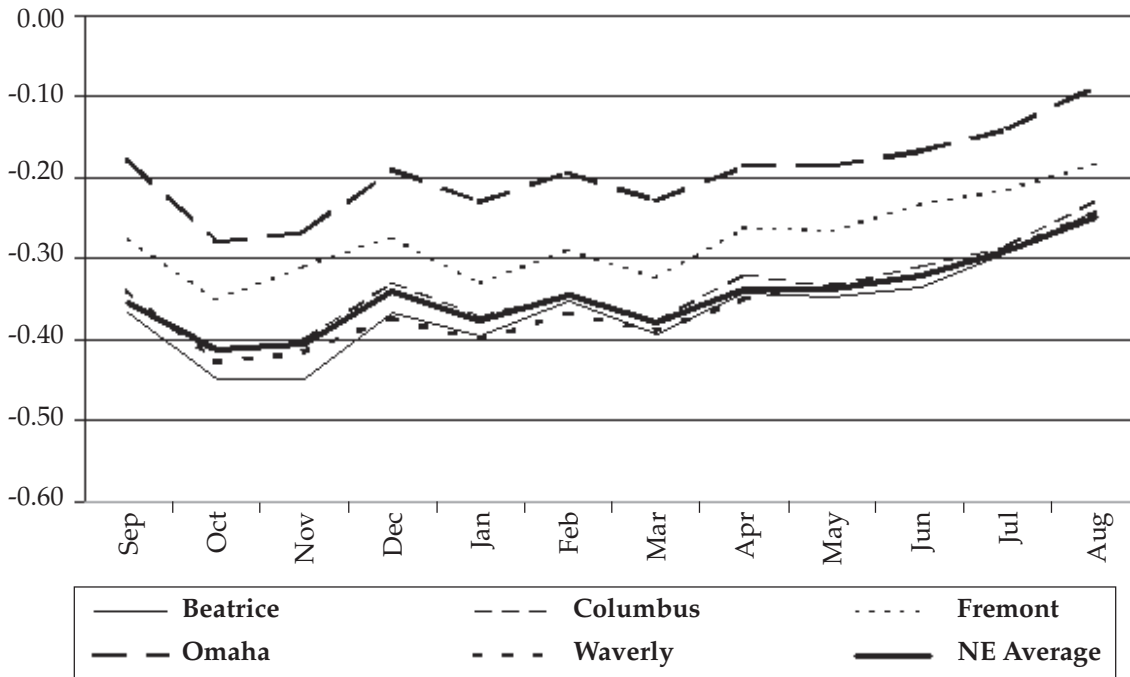


Figure 7. 1998-2002 marketing year average basis for east and southeast Nebraska soybean markets (\$/bu.)

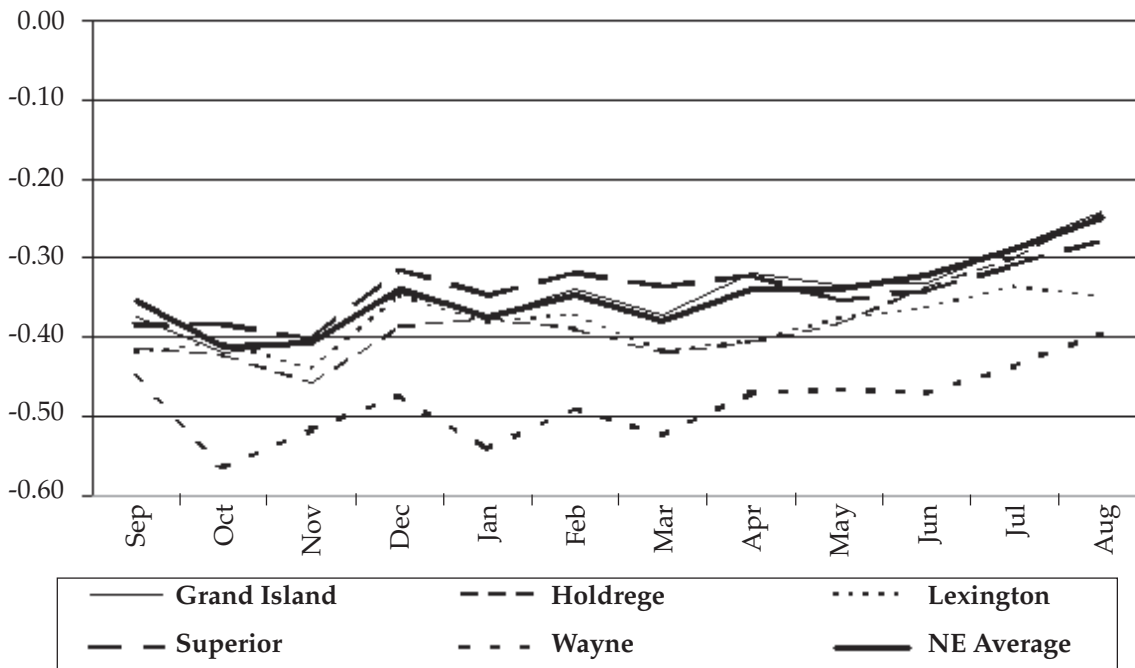


Figure 8. 1998-2002 marketing year average basis for north and central Nebraska soybean markets (\$/bu.)

Wheat

Wheat basis data is available for 22 market sites in Nebraska. Six of these market sites have data for 10 or more years. Thirteen market sites have data for five or more years. Figure 9 shows the Thursday average wheat price and basis for the Nebraska market sites that have 10

years of data and the Kansas City Board of Trade (KBOT) Thursday close. Positive bases appear to be associated with high prices.

Figure 10 shows the average wheat basis by month for the first and last five-year periods of the 1993-2002 marketing years and for the entire 10-year period. There were some pattern similarities. The basis

widened from harvest through September or October. It then narrowed until December.

There were also some obvious pattern differences. The first and last five-year averages consistently moved in opposite directions from one month to the next from December through May. However, they both remained narrower than they

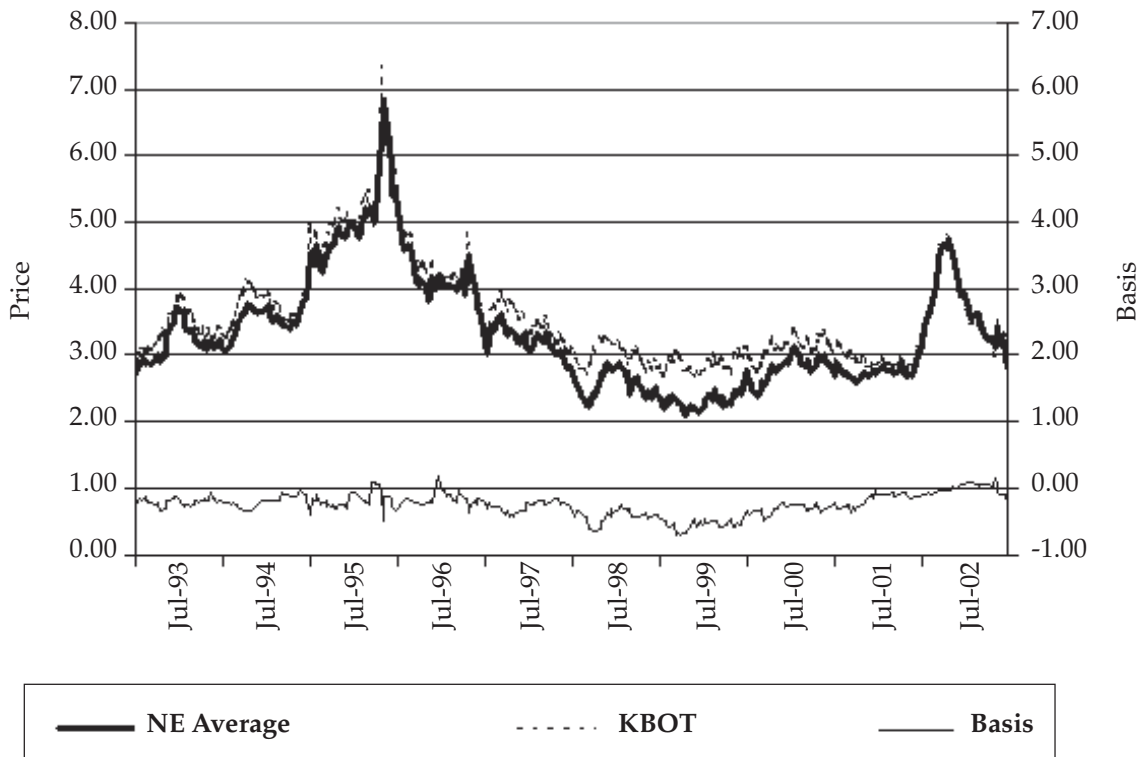


Figure 9. Nebraska 1992-2002 average wheat price and basis (\$/bu.)

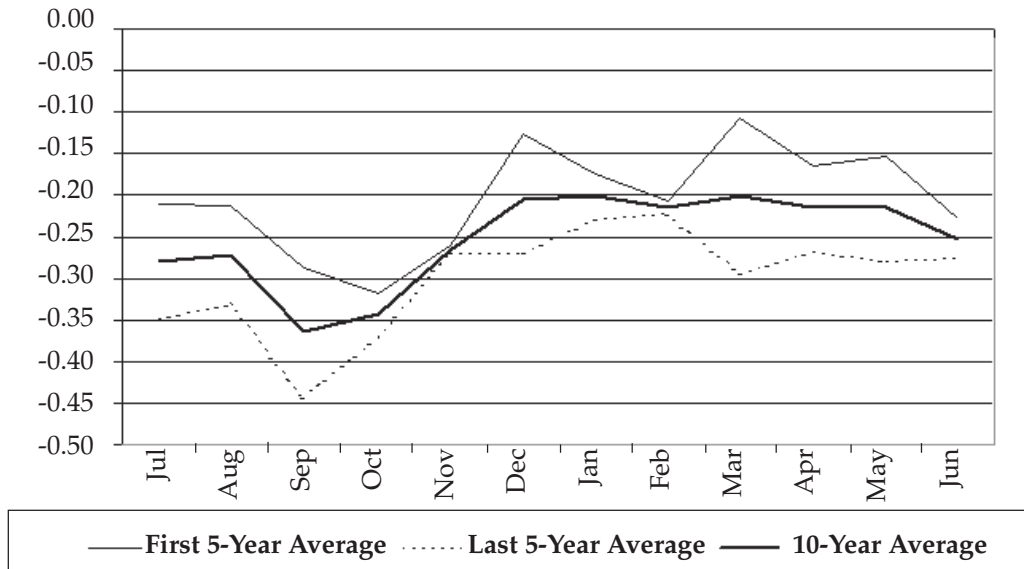


Figure 10. Comparison of Nebraska average wheat basis for 1993-2002 marketing years (\$/bu.)

were in the September-October period. The last five-year average basis was consistently wider than the first five-year average, although they were very close in November and February.

Table IV shows the average annual basis for up to 10 years for each of the 13 market sites that have

at least five years data. The narrowest basis when all market sites in Nebraska were averaged was a negative five cents per bushel in 2002 and the widest was a negative 60 cents per bushel in 1999. Waverly had the narrowest average basis the most often and Brule the widest. Dix had the narrowest basis in 1996 and

the widest in 1997. Columbus and the surrounding market sites, Duncan, Osceola and Tarnov, had the narrowest average basis in 1999 and the widest in 2000. The difference between the narrowest and widest average basis varied from five cents in 1996 to 28 cents in 1999.

Table IV. Annual average wheat basis by market (\$/bu.)

Market	1993	1994	1995	1996	1997	1998	1999	2000	2001	2002
Beatrice	-0.21	-0.18	-0.19	-0.18	-0.28	-0.46	-0.55	-0.23	-0.17	0.00
Brule				-0.19	-0.36	-0.59	-0.78	-0.44	-0.26	-0.13
Columbus	-0.22	-0.22	-0.21	-0.19	-0.32	-0.46	-0.50	-0.47	-0.19	-0.08
Dix				-0.14	-0.38	-0.55	-0.76	-0.41	-0.21	-0.03
Duncan				-0.19	-0.33	-0.46	-0.50	-0.47	-0.19	-0.08
Grand Island	-0.19	-0.26	-0.18	-0.18	-0.32	-0.47	-0.68	-0.35	-0.17	-0.01
Holdrege				-0.16	-0.36	-0.45	-0.50	-0.32	-0.21	-0.07
Kimball				-0.14	-0.36	-0.55	-0.76	-0.41	-0.21	-0.02
Lexington	-0.19	-0.15	-0.16	-0.19	-0.30	-0.39	-0.51	-0.29	-0.19	0.01
Ogallala				-0.19	-0.34	-0.59	-0.78	-0.44	-0.26	-0.13
Osceola						-0.43	-0.50	-0.47	-0.19	-0.08
Superior	-0.27	-0.25	-0.15	-0.15	-0.24	-0.45	-0.55	-0.32	-0.17	0.04
Tarnov				-0.19	-0.33	-0.46	-0.50	-0.47	-0.19	-0.08
Waverly	-0.13	-0.17	-0.12	-0.14	-0.15	-0.33	-0.51	-0.22	-0.14	0.00

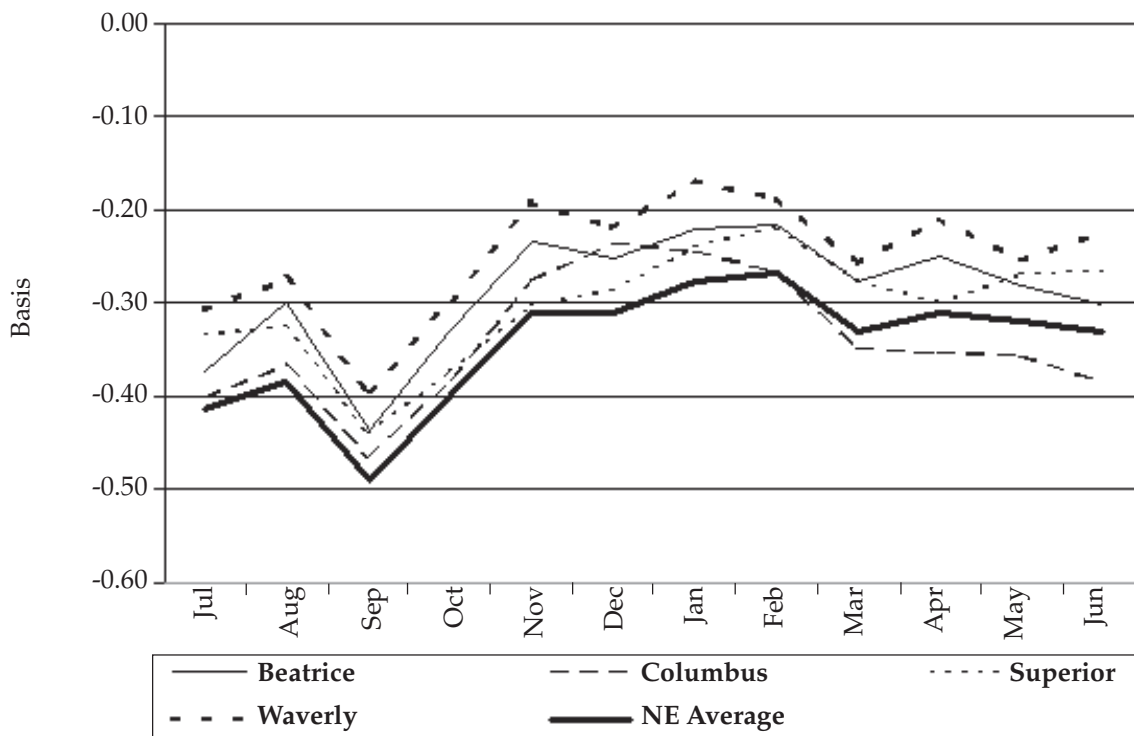


Figure 11. 1998-2002 marketing year average basis for eastern Nebraska wheat markets (\$/bu.)

Figures 11 through 13 show monthly averages for individual market sites over the past five years. Tarnov and Duncan were not graphed because they are geographically very close to Columbus and their bases were very similar to the Columbus basis.

The two patterns that emerge when viewing these graphs are a definite seasonal pattern for the individual market sites and a geographic influence. The average

basis was widest in September for every market. It was narrowest in January or February for all market sites except Waverly.

The geographic influence was also evident, as expected. Since transportation costs are a component of the basis, one would expect the basis to widen as the distance to the point of consumption increases. Since the distance to the eastern population centers and the Gulf coast ports increases as one moves

west across Nebraska, one would expect the basis to be greater for those market sites that are located farther west when most wheat is shipped east. However, in years when there is less wheat production in the far west and wheat moves west toward the western population centers and ports, one would expect that the basis would be narrower for market sites located farther west. Data showed the basis usually widened from east to west.

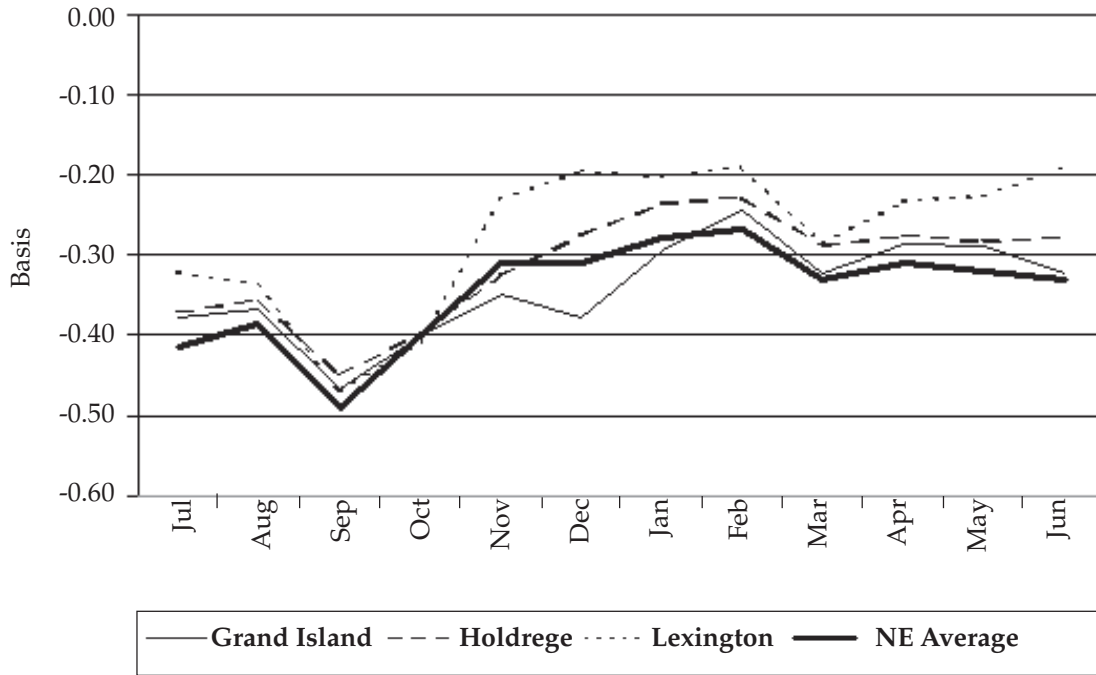


Figure 12. 1998-2002 marketing year average basis for central Nebraska wheat markets (\$/bu.)

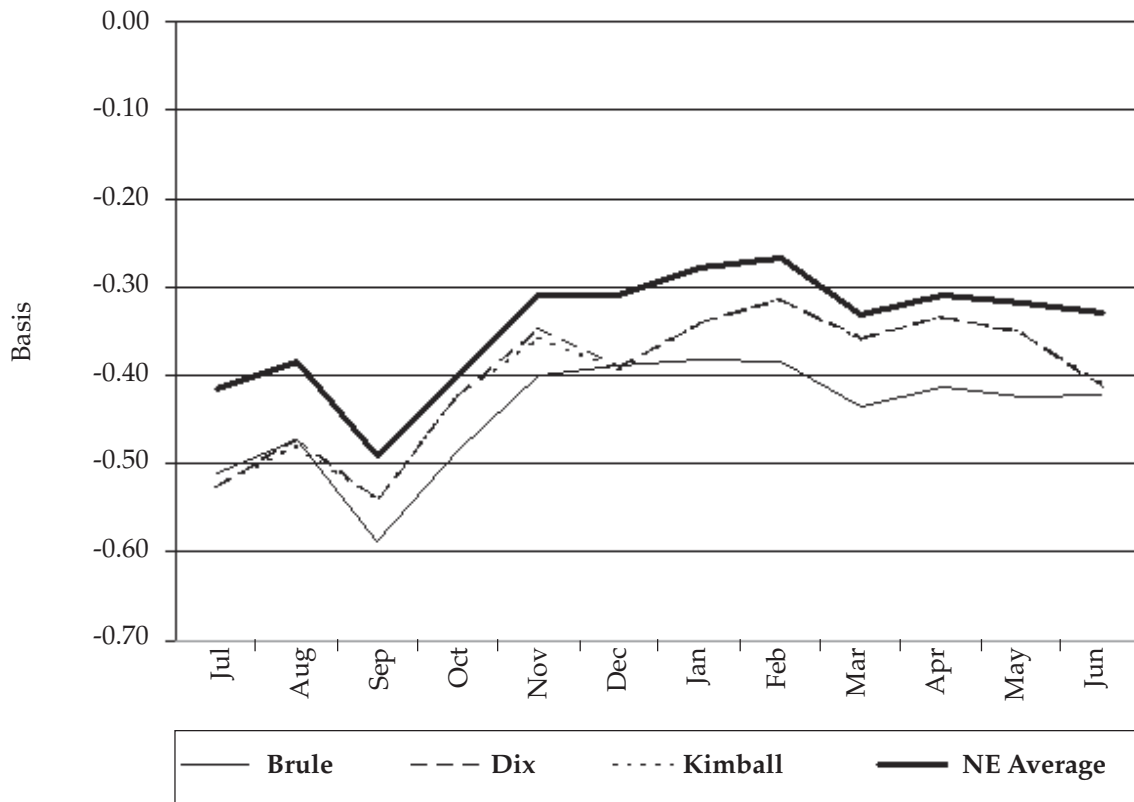


Figure 13. 1998-2002 marketing year average basis for western Nebraska wheat markets (\$/bu.)

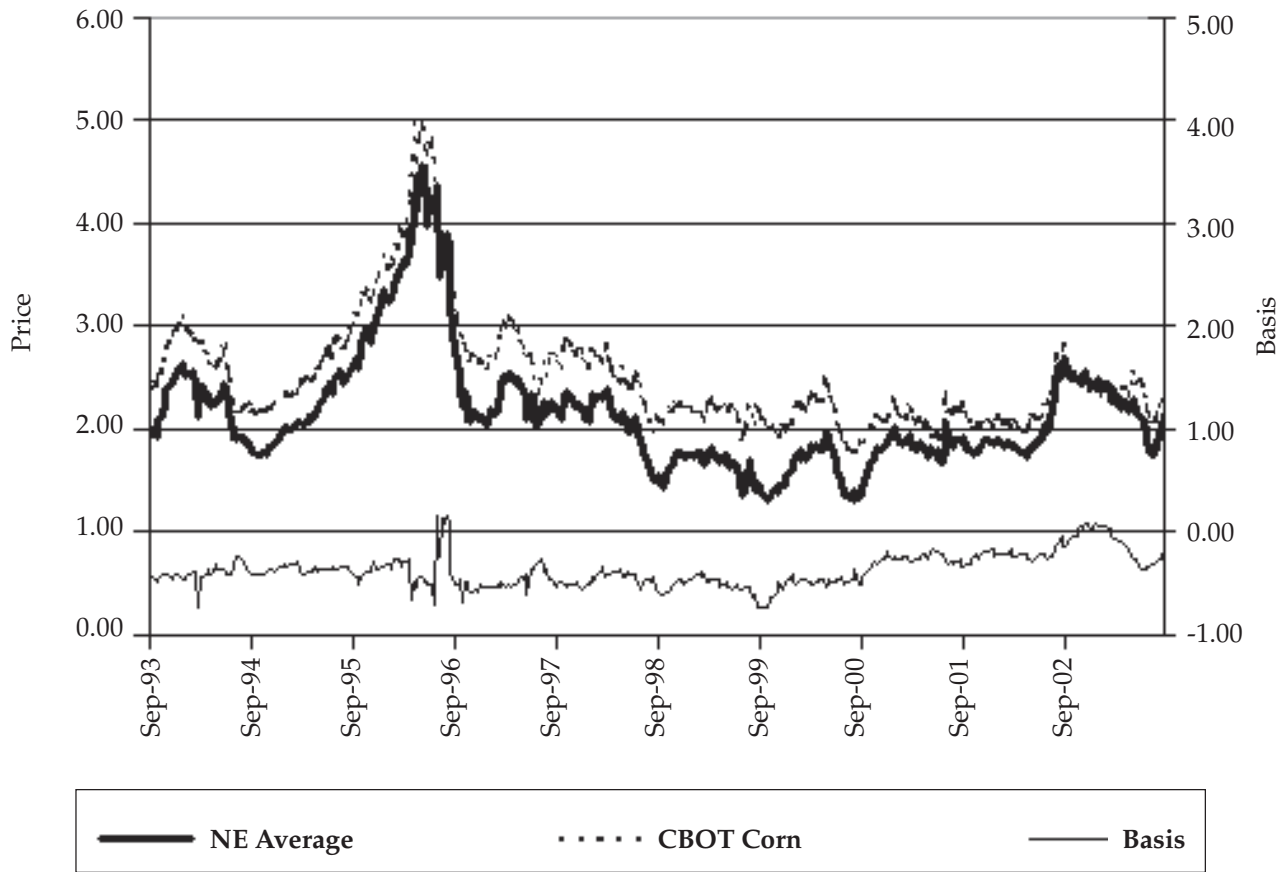


Figure 14. Nebraska 1992-2002 average sorghum price and basis (\$/bu.)

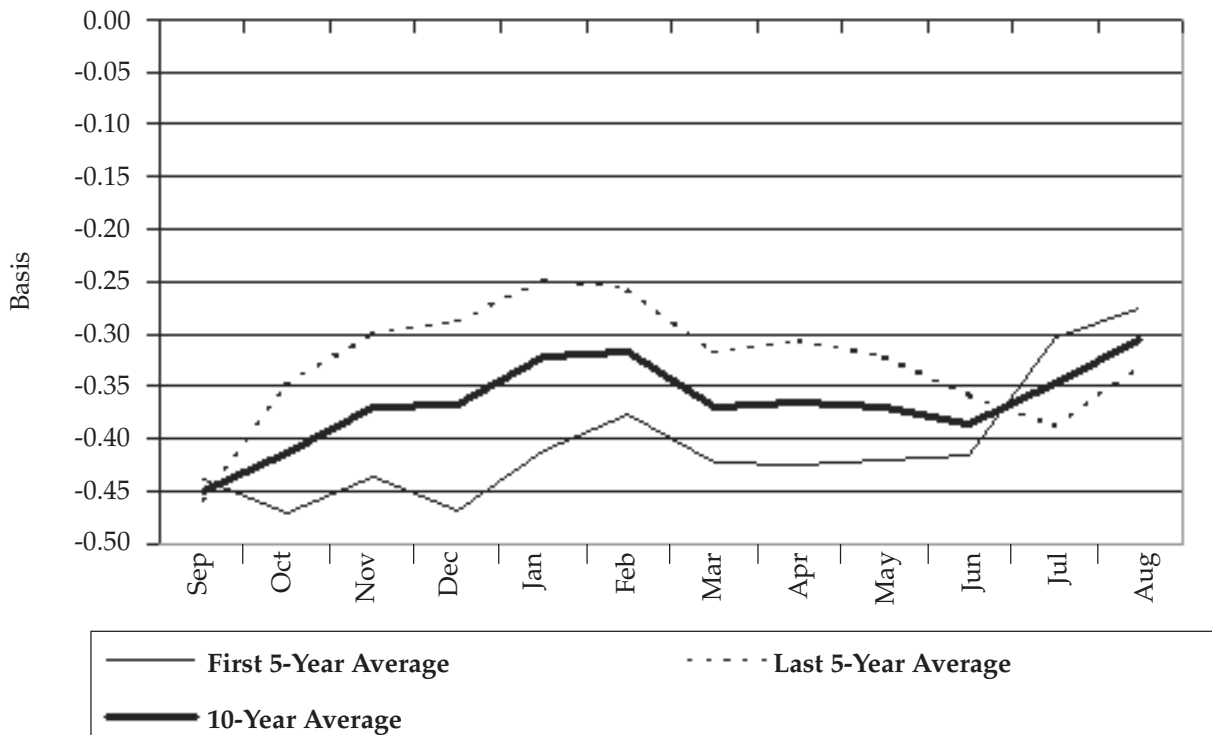


Figure 15. Comparison of Nebraska average sorghum basis for 1993-2002 marketing years (\$/bu.)

Table V. Average annual sorghum basis by market (\$/bu.)

	1993	1994	1995	1996	1997	1998	1999	2000	2001	2002
Beatrice	-0.39	-0.36	-0.31	-0.51	-0.47	-0.51	-0.52	-0.23	-0.24	-0.11
Grand Island				-0.44	-0.42	-0.45	-0.44	-0.24	-0.18	-0.04
Greenwood	-0.43	-0.41	-0.36	-0.50	-0.48	-0.53	-0.55	-0.30	-0.25	-0.17
Holdrege				-0.52	-0.53	-0.60	-0.58	-0.34	-0.28	-0.13
Manley				-0.47	-0.48	-0.53	-0.55	-0.30	-0.27	-0.17
Murdock				-0.47	-0.48	-0.53	-0.55	-0.30	-0.25	-0.17
Superior	-0.32	-0.27	-0.24	-0.41	-0.38	-0.48	-0.47	-0.23	-0.16	-0.03
Waverly	-0.44	-0.41	-0.42	-0.51	-0.49	-0.52	-0.54	-0.30	-0.24	-0.15

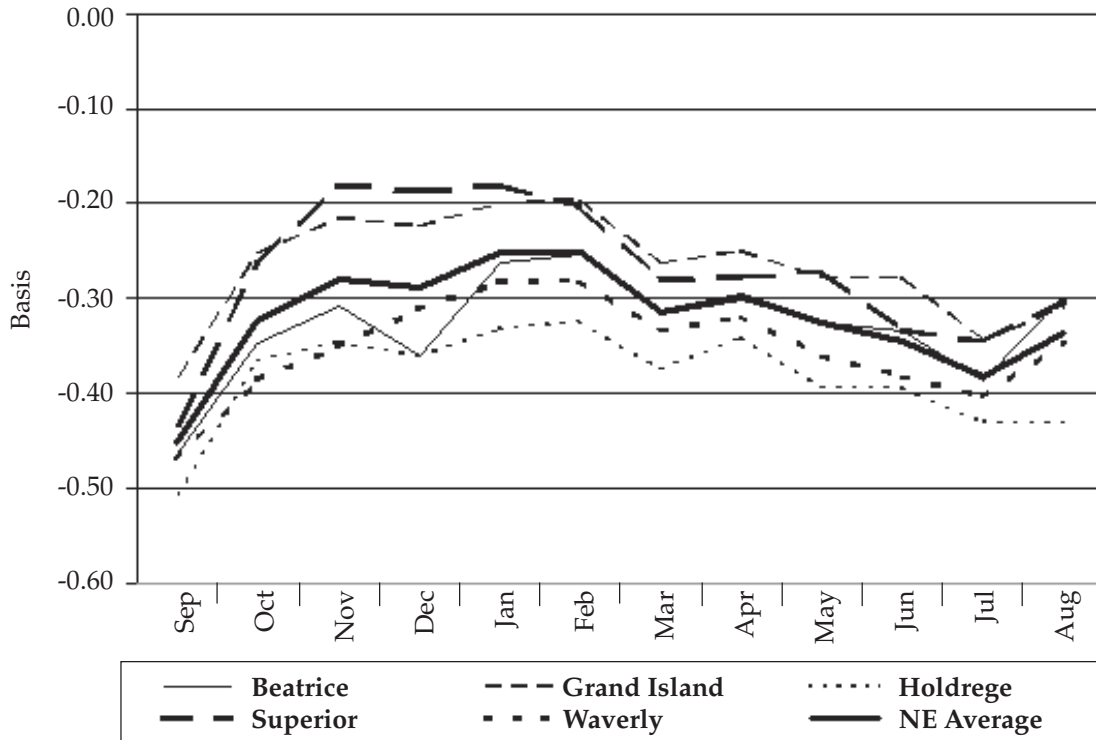


Figure 16. 1998-2002 marketing year average basis for Nebraska sorghum markets (\$/bu.)

Sorghum

There is no sorghum futures market so the sorghum basis was calculated using the corn futures market. Data is available for nine market sites. Four of these have data for 10 years and eight for five years.

Figure 14 shows the average price and basis for the four sorghum market sites. The periods when the basis was positive appear to be associated with relatively high prices.

Figure 15 shows that average basis for the first five years had no trend until June when it narrowed rapidly until August. The last five-year average basis showed a narrowing of the basis from September

through January followed by a widening of the basis until July. Except for July and September, the average basis for the last five years was noticeably narrower than that of the first five years.

Table V shows the average annual sorghum basis for the different market sites. The narrowest basis when all market sites in Nebraska were averaged was a negative 12 cents per bushel in 2002, and the widest was a negative 52 cents per bushel in 1998 and 1999. Holdrege consistently had the widest basis and Waverly usually had the lowest. The average Nebraska annual sorghum basis varied from 52 cents per bushel in

1998 and 1999 to 12 cents per bushel in 2002. The greatest difference between the highest and lowest average basis was 18 cents per bushel in 1995 and the least difference was 10 cents per bushel in 2000.

Figure 16 shows the seasonal sorghum basis pattern for market sites having five years of data. The Greenwood, Manley and Murdock market sites were not included in the graph because they are located close to Waverly and had nearly identical prices. Basis movement patterns were similar for all the market sites. They narrowed from September through November. Most market sites were narrowest in February after which they trended wider until September.

In *Table V* above, Superior had the narrowest basis three out of the past five years but *Figure 16* shows that its average basis during the last five years was narrowest during only part of the year.

Summary

While hedging advisors stress the importance of knowing the basis when developing a marketing strategy, predicting a future basis for a given market is not precise. Historical data shows that there is

usually more year-to-year basis variation than either seasonal or site variation. No attempt was made in this analysis to identify the factors that cause the year-to-year variations. Some seasonal basis patterns appear to exist and remain over time. Individual market sites do not always appear to follow average seasonal patterns.

The implications are 1) the use of futures and options as marketing tools remain imprecise at best because of basis variability, 2) basis analysis needs to be done on individual market sites to increase

reliability because they may differ from area averages, and 3) the actual basis for a market or set of markets is subject to unique and unexpected factors that may have major impacts for a given period. While producers may avoid some basis variability through the use of marketing contracts, there remains a need for more analysis to determine the forces that affect a marketing site's basis and the need for collection of localized market data, both for analysis and for producer use.

Appendix A – Corn Markets

Beatrice

	<i>Sep</i>	<i>Oct</i>	<i>Nov</i>	<i>Dec</i>	<i>Jan</i>	<i>Feb</i>	<i>Mar</i>	<i>Apr</i>	<i>May</i>	<i>Jun</i>	<i>Jul</i>	<i>Aug</i>
88-89							-0.28	-0.24	-0.23	-0.22	-0.15	-0.13
89-90	-0.19	-0.23	-0.18	-0.16	-0.21	-0.21	-0.27	-0.26	-0.27	-0.26	-0.14	-0.05
90-91	-0.12	-0.24	-0.17	-0.22	-0.19	-0.19	-0.24	-0.19	-0.18	-0.13	-0.10	-0.20
91-92	-0.22	-0.23	-0.17	-0.25	-0.25	-0.29	-0.31	-0.18	-0.18	-0.15	-0.12	-0.12
92-93	-0.15	-0.19	-0.18	-0.25	-0.20	-0.17	-0.20	-0.21	-0.24	-0.20	-0.22	-0.15
93-94	-0.24	-0.23	-0.17	-0.22	-0.24	-0.17	-0.20	-0.12	-0.06	-0.10	-0.01	-0.03
94-95	-0.18	-0.21	-0.22	-0.21	-0.18	-0.19	-0.24	-0.20	-0.20	-0.16	-0.15	-0.17
95-96	-0.23	-0.26	-0.20	-0.26	-0.22	-0.15	-0.11	-0.19	-0.06	-0.01	0.89	1.11
96-97	0.33	-0.26	-0.29	-0.27	-0.24	-0.25	-0.29	-0.31	-0.23	-0.23	-0.15	0.82
97-98	0.24	-0.33	-0.32	-0.36	-0.31	-0.28	-0.30	-0.23	-0.27	-0.27	-0.33	-0.35
98-99	-0.50	-0.45	-0.35	-0.48	-0.30	-0.26	-0.32	-0.32	-0.32	-0.32	-0.38	-0.44
99-00	-0.53	-0.49	-0.37	-0.35	-0.34	-0.32	-0.34	-0.29	-0.34	-0.25	-0.32	-0.33
00-01	-0.37	-0.28	-0.23	-0.20	-0.24	-0.22	-0.24	-0.24	-0.26	-0.24	-0.31	-0.28
01-02	-0.32	-0.27	-0.25	-0.19	-0.23	-0.20	-0.24	-0.18	-0.21	-0.18	-0.23	-0.14
02-03	-0.17	-0.07	-0.03	-0.08	-0.07	-0.04	-0.06	-0.08	-0.13	-0.16	-0.13	-0.13

Belgrade

	<i>Sep</i>	<i>Oct</i>	<i>Nov</i>	<i>Dec</i>	<i>Jan</i>	<i>Feb</i>	<i>Mar</i>	<i>Apr</i>	<i>May</i>	<i>Jun</i>	<i>Jul</i>	<i>Aug</i>
01-02				-0.16	-0.22	-0.18	-0.22	-0.19	-0.22	-0.21	-0.25	-0.15
02-03	-0.16	-0.09	-0.08	-0.12	-0.11	-0.08	-0.09	-0.09	-0.13	-0.16	-0.14	-0.16

Bloomfield

	<i>Sep</i>	<i>Oct</i>	<i>Nov</i>	<i>Dec</i>	<i>Jan</i>	<i>Feb</i>	<i>Mar</i>	<i>Apr</i>	<i>May</i>	<i>Jun</i>	<i>Jul</i>	<i>Aug</i>
01-02				-0.21	-0.24	-0.23	-0.23	-0.18	-0.22	-0.23	-0.26	-0.16
02-03	-0.16	-0.12	-0.04	-0.07	-0.06	-0.02	-0.02	-0.04	-0.07	-0.10	-0.11	-0.20

Brule

	<i>Sep</i>	<i>Oct</i>	<i>Nov</i>	<i>Dec</i>	<i>Jan</i>	<i>Feb</i>	<i>Mar</i>	<i>Apr</i>	<i>May</i>	<i>Jun</i>	<i>Jul</i>	<i>Aug</i>
96-97					-0.22	-0.29	-0.37	-0.40	-0.28	-0.22	-0.09	0.76
97-98	-0.20	-0.33	-0.34	-0.39	-0.35	-0.27	-0.32	-0.20	-0.23	-0.23	-0.31	-0.34
98-99	-0.46	-0.46	-0.40	-0.47	-0.41	-0.37	-0.42	-0.46	-0.45	-0.46	-0.43	-0.51
99-00	-0.58	-0.43	-0.42	-0.47	-0.46	-0.46	-0.46	-0.41	-0.44	-0.33	-0.32	-0.29
00-01	-0.33	-0.24	-0.25	-0.21	-0.28	-0.24	-0.26	-0.23	-0.25	-0.19	-0.27	-0.26
01-02	-0.28	-0.21	-0.25	-0.21	-0.26	-0.24	-0.24	-0.21	-0.24	-0.18	-0.20	-0.09
02-03	-0.04	-0.01	0.04	0.00	-0.02	0.01	-0.02	-0.02	-0.07	-0.14	-0.14	-0.17

Columbus

	Sep	Oct	Nov	Dec	Jan	Feb	Mar	Apr	May	Jun	Jul	Aug
96-97					-0.19	-0.20	-0.26	-0.27	-0.16	-0.15	-0.12	-0.22
97-98	-0.26	-0.28	-0.28	-0.31	-0.27	-0.24	-0.26	-0.18	-0.21	-0.22	-0.32	-0.32
98-99	-0.46	-0.39	-0.31	-0.34	-0.26	-0.25	-0.31	-0.31	-0.31	-0.31	-0.36	-0.49
99-00	-0.53	-0.41	-0.29	-0.33	-0.34	-0.31	-0.35	-0.29	-0.32	-0.21	-0.30	-0.30
00-01	-0.31	-0.19	-0.21	-0.17	-0.26	-0.22	-0.25	-0.21	-0.27	-0.24	-0.32	-0.28
01-02	-0.30	-0.22	-0.23	-0.15	-0.21	-0.17	-0.21	-0.18	-0.21	-0.18	-0.23	-0.15
02-03	-0.15	-0.08	-0.05	-0.10	-0.09	-0.06	-0.07	-0.07	-0.11	-0.14	-0.12	-0.14

Dix

	Sep	Oct	Nov	Dec	Jan	Feb	Mar	Apr	May	Jun	Jul	Aug
99-00					-0.38	-0.38	-0.43	-0.36	-0.39	-0.12	0.00	-0.16
00-01	-0.21	-0.21	-0.22	-0.19	-0.23	-0.12	-0.13	-0.06	-0.08	-0.02	-0.10	-0.11
01-02	-0.17	-0.19	-0.22	-0.18	-0.21	-0.17	-0.18	-0.13	-0.16	-0.09	-0.14	0.01
02-03	0.06	0.18	0.19	0.19	0.19	0.17	0.15	0.15	0.14	0.05	-0.06	-0.11

Duncan

	Sep	Oct	Nov	Dec	Jan	Feb	Mar	Apr	May	Jun	Jul	Aug
96-97					-0.19	-0.20	-0.26	-0.27	-0.17	-0.16	-0.12	-0.22
97-98	-0.26	-0.28	-0.29	-0.32	-0.28	-0.25	-0.27	-0.19	-0.23	-0.23	-0.33	-0.33
98-99	-0.47	-0.40	-0.32	-0.36	-0.27	-0.26	-0.32	-0.32	-0.31	-0.31	-0.36	-0.49
99-00	-0.53	-0.42	-0.30	-0.34	-0.36	-0.32	-0.36	-0.29	-0.32	-0.21	-0.30	-0.30
00-01	-0.33	-0.19	-0.21	-0.16	-0.26	-0.22	-0.24	-0.20	-0.26	-0.23	-0.32	-0.28
01-02	-0.30	-0.23	-0.23	-0.15	-0.21	-0.17	-0.21	-0.18	-0.21	-0.18	-0.23	-0.15
02-03	-0.15	-0.09	-0.07	-0.10	-0.09	-0.06	-0.07	-0.07	-0.11	-0.14	-0.12	-0.15

Elm Creek

	Sep	Oct	Nov	Dec	Jan	Feb	Mar	Apr	May	Jun	Jul	Aug
88-89							-0.20	-0.16	-0.15	-0.13	-0.15	-0.05
89-90	-0.13	-0.16	-0.12	-0.09	-0.14	-0.18	-0.22	-0.20	-0.21	-0.20	-0.12	
90-91	-0.17	-0.18	-0.13	-0.16	-0.13	-0.12	-0.16	-0.10	-0.09	-0.05	-0.04	-0.14
91-92	-0.16	-0.22	-0.15	-0.18	-0.21	-0.20	-0.21	-0.10	-0.11	-0.08	-0.01	-0.02
92-93	-0.04	-0.07	-0.08	-0.14	-0.11	-0.11	-0.08	-0.10	-0.11	-0.11	-0.13	-0.07
93-94	-0.17	-0.15	-0.12	-0.17	-0.18	-0.09	-0.16	-0.08	-0.05	-0.05	0.01	-0.01
94-95	-0.09	-0.16	-0.14	-0.10	-0.09	-0.05	-0.10	-0.06	-0.09	-0.04	-0.03	-0.05
95-96	-0.15	-0.18	-0.18	-0.20	-0.19	-0.08	-0.02	-0.15	0.02	0.05	0.89	0.92
96-97	-0.09	-0.10	-0.16	-0.16	-0.12	-0.15	-0.20	-0.22	-0.14	-0.12	-0.09	-0.21
97-98	-0.26	-0.26	-0.27	-0.30	-0.26	-0.20	-0.22	-0.17	-0.20	-0.24	-0.29	-0.31
98-99	-0.41	-0.34	-0.27	-0.30	-0.22	-0.19	-0.27	-0.27	-0.26	-0.27	-0.26	-0.44
99-00	-0.49	-0.37	-0.24	-0.27	-0.27	-0.29	-0.30	-0.23	-0.29	-0.21	-0.26	-0.26
00-01	-0.31	-0.22	-0.21	-0.16	-0.24	-0.22	-0.22	-0.18	-0.24	-0.21	-0.30	-0.25
01-02	-0.29	-0.23	-0.20	-0.13	-0.19	-0.14	-0.17	-0.13	-0.15	-0.15	-0.17	-0.09
02-03	-0.08	-0.04	-0.01	-0.06	-0.05	-0.02	-0.03	-0.04	-0.08	-0.08	-0.09	-0.10

Fremont

	Sep	Oct	Nov	Dec	Jan	Feb	Mar	Apr	May	Jun	Jul	Aug
88-89							-0.22	-0.17	-0.15	-0.13	-0.12	-0.06
89-90	-0.12	-0.16	-0.11	-0.09	-0.15	-0.17	-0.20	-0.19	-0.20	-0.19	-0.08	-0.07
90-91	-0.10	-0.16	-0.12	-0.16	-0.14	-0.13	-0.17	-0.12	-0.13	-0.08	-0.08	-0.17
91-92	-0.20	-0.22	-0.14	-0.20	-0.23	-0.22	-0.23	-0.15	-0.14	-0.12	-0.08	-0.09
92-93	-0.10	-0.13	-0.13	-0.27	-0.18	-0.11	-0.12	-0.11	-0.13	-0.10	-0.16	-0.10
93-94	-0.20	-0.18	-0.12	-0.18	-0.23	-0.13	-0.20	-0.12	-0.09	-0.11	-0.04	-0.07
94-95	-0.16	-0.25	-0.25	-0.19	-0.19	-0.18	-0.19	-0.15	-0.15	-0.12	-0.12	-0.16
95-96	-0.25	-0.26	-0.23	-0.28								
96-97					-0.16	-0.16	-0.22	-0.23	-0.16	-0.14	-0.10	-0.22
97-98	-0.28	-0.33	-0.30	-0.31	-0.30	-0.27	-0.31	-0.21	-0.25	-0.26	-0.34	-0.35
98-99	-0.48	-0.40	-0.33	-0.39	-0.29	-0.28	-0.33	-0.34	-0.35	-0.33	-0.33	-0.52
99-00	-0.58	-0.49	-0.33	-0.34	-0.36	-0.33	-0.36	-0.30	-0.30	-0.22	-0.36	-0.40
00-01	-0.42	-0.32	-0.27	-0.23	-0.32	-0.28	-0.30	-0.27	-0.33	-0.30	-0.38	-0.35
01-02	-0.37	-0.26	-0.23	-0.18	-0.26	-0.20	-0.21	-0.17	-0.21	-0.19	-0.26	-0.16
02-03	-0.17	-0.15	-0.13	-0.18	-0.15	-0.09	-0.10	-0.10	-0.13	-0.18	-0.17	-0.20

Grand Island

	Sep	Oct	Nov	Dec	Jan	Feb	Mar	Apr	May	Jun	Jul	Aug
90-91	-0.16	-0.19	-0.16	-0.19	-0.16	-0.14	-0.19	-0.13	-0.13	-0.08	-0.14	-0.19
91-92	-0.20	-0.23	-0.16	-0.22	-0.22	-0.20	-0.23	-0.15	-0.15	-0.13	-0.09	-0.10
92-93	-0.13	-0.10	-0.09	-0.18	-0.12	-0.07	-0.11	-0.10	-0.13	-0.12	-0.14	-0.10
93-94	-0.18	-0.18	-0.12	-0.19	-0.25	-0.14	-0.19	-0.10	-0.06	-0.06	-0.03	-0.05
94-95	-0.11	-0.15	-0.12	-0.15	-0.12	0.05	-0.12	-0.11	-0.13	-0.09	-0.09	-0.08
95-96	-0.20	-0.20	-0.19	-0.26	-0.21	-0.14	-0.06	-0.15	-0.03	0.00	0.94	0.95
96-97	0.20	-0.13	-0.20	-0.18	-0.17	-0.16	-0.25	-0.25	-0.16	-0.15	-0.09	-0.19
97-98	-0.24	-0.27	-0.28	-0.30	-0.26	-0.22	-0.24	-0.18	-0.21	-0.22	-0.30	-0.32
98-99	-0.42	-0.37	-0.27	-0.32	-0.23	-0.20	-0.27	-0.28	-0.26	-0.29	-0.33	-0.42
99-00	-0.47	-0.37	-0.28	-0.30	-0.30	-0.29	-0.32	-0.27	-0.31	-0.24	-0.31	-0.31
00-01	-0.35	-0.24	-0.21	-0.18	-0.24	-0.23	-0.23	-0.20	-0.25	-0.22	-0.31	-0.28
01-02	-0.29	-0.23	-0.19	-0.13	-0.19	-0.16	-0.19	-0.17	-0.20	-0.17	-0.22	-0.12
02-03	-0.12	-0.05	-0.04	-0.09	-0.08	-0.07	-0.08	-0.07	-0.10	-0.12	-0.07	-0.11

Greenwood

	Sep	Oct	Nov	Dec	Jan	Feb	Mar	Apr	May	Jun	Jul	Aug
88-89							-0.30	-0.25	-0.25	-0.24	-0.17	-0.13
89-90	-0.18	-0.23	-0.19	-0.17	-0.22	-0.24	-0.28	-0.27	-0.29	-0.28	-0.14	-0.12
90-91	-0.20	-0.25	-0.16	-0.24	-0.21	-0.18	-0.24	-0.18	-0.17	-0.14	-0.14	-0.20
91-92	-0.26	-0.25	-0.19	-0.26	-0.26	-0.24	-0.30	-0.20	-0.20	-0.17	-0.13	-0.14
92-93	-0.15	-0.20	-0.19	-0.30	-0.23	-0.17	-0.20	-0.18	-0.20	-0.18	-0.19	-0.14
93-94	-0.22	-0.20	-0.17	-0.23	-0.25	-0.18	-0.22	-0.11	-0.08	-0.11	-0.06	-0.09
94-95	-0.18	-0.23	-0.26	-0.24	-0.20	-0.17	-0.21	-0.16	-0.19	-0.14	-0.14	-0.18
95-96	-0.22	-0.22	-0.19	-0.25	-0.19	-0.16	-0.15	-0.23	-0.06	0.00	0.80	1.01
96-97	0.18	-0.25	-0.26	-0.24	-0.22	-0.25	-0.30	-0.29	-0.20	-0.20	-0.15	-0.28
97-98	-0.35	-0.34	-0.34	-0.35	-0.31	-0.26	-0.28	-0.20	-0.23	-0.25	-0.36	-0.34
98-99	-0.48	-0.49	-0.38	-0.37	-0.29	-0.29	-0.33	-0.34	-0.32	-0.33	-0.39	-0.49
99-00	-0.57	-0.52	-0.39	-0.38	-0.37	-0.35	-0.37	-0.32	-0.36	-0.30	-0.39	-0.40
00-01	-0.42	-0.32	-0.27	-0.26	-0.28	-0.28	-0.29	-0.27	-0.33	-0.30	-0.35	-0.31
01-02	-0.35	-0.31	-0.29	-0.20	-0.24	-0.21	-0.24	-0.21	-0.24	-0.23	-0.25	-0.19
02-03	-0.20	-0.12	-0.08	-0.12	-0.13	-0.11	-0.11	-0.14	-0.16	-0.19	-0.17	-0.19

Holdrege

	<i>Sep</i>	<i>Oct</i>	<i>Nov</i>	<i>Dec</i>	<i>Jan</i>	<i>Feb</i>	<i>Mar</i>	<i>Apr</i>	<i>May</i>	<i>Jun</i>	<i>Jul</i>	<i>Aug</i>
96-97					-0.20	-0.20	-0.27	-0.29	-0.28	-0.20	-0.12	-0.21
97-98	-0.25	-0.27	-0.28	-0.33	-0.28	-0.23	-0.24	-0.20	-0.24	-0.25	-0.32	-0.33
98-99	-0.47	-0.46	-0.30	-0.36	-0.26	-0.25	-0.30	-0.30	-0.30	-0.32	-0.35	-0.44
99-00	-0.50	-0.40	-0.31	-0.31	-0.31	-0.31	-0.34	-0.27	-0.31	-0.24	-0.29	-0.28
00-01	-0.32	-0.22	-0.22	-0.17	-0.24	-0.20	-0.23	-0.20	-0.24	-0.20	-0.28	-0.27
01-02	-0.29	-0.24	-0.22	-0.15	-0.20	-0.17	-0.18	-0.15	-0.18	-0.17	-0.22	-0.10
02-03	-0.10	-0.02	-0.01	-0.08	-0.07	-0.05	-0.07	-0.07	-0.09	-0.12	-0.11	-0.15

Kimball

	<i>Sep</i>	<i>Oct</i>	<i>Nov</i>	<i>Dec</i>	<i>Jan</i>	<i>Feb</i>	<i>Mar</i>	<i>Apr</i>	<i>May</i>	<i>Jun</i>	<i>Jul</i>	<i>Aug</i>
99-00					-0.38	-0.38	-0.43	-0.36	-0.39	-0.12	0.00	-0.16
00-01	-0.21	-0.21	-0.22	-0.19	-0.23	-0.12	-0.13	-0.06	-0.08	-0.02	-0.10	-0.11
01-02	-0.17	-0.19	-0.22	-0.18	-0.21	-0.17	-0.18	-0.13	-0.16	-0.09	-0.14	0.01
02-03	0.06	0.18	0.19	0.19	0.19	0.17	0.15	0.15	0.14	0.05	-0.06	-0.11

Lexington

	<i>Sep</i>	<i>Oct</i>	<i>Nov</i>	<i>Dec</i>	<i>Jan</i>	<i>Feb</i>	<i>Mar</i>	<i>Apr</i>	<i>May</i>	<i>Jun</i>	<i>Jul</i>	<i>Aug</i>
90-91								-0.10	-0.10	-0.04	-0.05	-0.15
91-92	-0.18	-0.23	-0.15	-0.19	-0.20	-0.20	-0.21	-0.11	-0.11	-0.09	-0.06	-0.06
92-93	-0.10	-0.11	-0.08	-0.17	-0.11	-0.07	-0.08	-0.11	-0.12	-0.10	-0.13	-0.06
93-94	-0.16	-0.16	-0.11	-0.19	-0.17	-0.09	-0.14	-0.08	-0.04	0.36	0.02	-0.03
94-95	-0.13	-0.17	-0.15	-0.10	-0.10	-0.08	-0.11	-0.06	-0.10	-0.05	-0.04	-0.04
95-96	-0.16	-0.19	-0.19	-0.21	-0.19	-0.06	-0.02	-0.14	0.05	0.06	0.91	1.01
96-97	0.06	-0.14	-0.12	-0.17	-0.15	-0.15	-0.20	-0.23	-0.14	-0.13	-0.11	-0.18
97-98	-0.24	-0.26	-0.28	-0.26	-0.24	-0.21	-0.22	-0.18	-0.20	-0.20	-0.27	-0.30
98-99	-0.43	-0.30	-0.26	-0.31	-0.20	-0.20	-0.27	-0.28	-0.26	-0.25	-0.30	-0.44
99-00	-0.49	-0.38	-0.24	-0.29	-0.28	-0.28	-0.31	-0.23	-0.29	-0.18	-0.24	-0.25
00-01	-0.29	-0.21	-0.22	-0.17	-0.24	-0.18	-0.21	-0.19	-0.22	-0.18	-0.27	-0.23
01-02	-0.26	-0.24	-0.21	-0.13	-0.17	-0.13	-0.16	-0.11	-0.13	-0.14	-0.20	-0.09
02-03	-0.10	-0.04	-0.03	-0.08	-0.07	-0.05	-0.05	-0.05	-0.07	-0.08	-0.06	-0.10

Manley

	<i>Sep</i>	<i>Oct</i>	<i>Nov</i>	<i>Dec</i>	<i>Jan</i>	<i>Feb</i>	<i>Mar</i>	<i>Apr</i>	<i>May</i>	<i>Jun</i>	<i>Jul</i>	<i>Aug</i>
96-97					-0.22	-0.25	-0.29	-0.29	-0.20	-0.20	-0.15	-0.28
97-98	-0.34	-0.33	-0.33	-0.35	-0.31	-0.26	-0.28	-0.20	-0.23	-0.25	-0.36	-0.34
98-99	-0.48	-0.49	-0.38	-0.37	-0.29	-0.29	-0.33	-0.34	-0.32	-0.33	-0.38	-0.49
99-00	-0.57	-0.51	-0.39	-0.37	-0.37	-0.34	-0.37	-0.32	-0.36	-0.30	-0.39	-0.40
00-01	-0.42	-0.32	-0.27	-0.26	-0.28	-0.28	-0.29	-0.27	-0.33	-0.30	-0.34	-0.32
01-02	-0.35	-0.31	-0.29	-0.20	-0.24	-0.21	-0.24	-0.21	-0.24	-0.23	-0.25	-0.19
02-03	-0.20	-0.12	-0.08	-0.12	-0.13	-0.11	-0.11	-0.12	-0.16	-0.19	-0.17	-0.18

Murdock

	<i>Sep</i>	<i>Oct</i>	<i>Nov</i>	<i>Dec</i>	<i>Jan</i>	<i>Feb</i>	<i>Mar</i>	<i>Apr</i>	<i>May</i>	<i>Jun</i>	<i>Jul</i>	<i>Aug</i>
96-97					-0.22	-0.25	-0.30	-0.29	-0.20	-0.20	-0.15	-0.28
97-98	-0.35	-0.33	-0.33	-0.35	-0.31	-0.26	-0.28	-0.20	-0.23	-0.25	-0.36	-0.34
98-99	-0.48	-0.49	-0.38	-0.37	-0.29	-0.29	-0.33	-0.34	-0.32	-0.33	-0.39	-0.49
99-00	-0.57	-0.52	-0.38	-0.38	-0.37	-0.35	-0.37	-0.32	-0.36	-0.30	-0.39	-0.40
00-01	-0.42	-0.32	-0.27	-0.26	-0.28	-0.28	-0.29	-0.27	-0.33	-0.30	-0.34	-0.32
01-02	-0.35	-0.31	-0.29	-0.20	-0.24	-0.21	-0.24	-0.21	-0.24	-0.23	-0.25	-0.19
02-03	-0.20	-0.13	-0.08	-0.12	-0.13	-0.11	-0.11	-0.12	-0.16	-0.19	-0.17	-0.18

Ogallala

	<i>Sep</i>	<i>Oct</i>	<i>Nov</i>	<i>Dec</i>	<i>Jan</i>	<i>Feb</i>	<i>Mar</i>	<i>Apr</i>	<i>May</i>	<i>Jun</i>	<i>Jul</i>	<i>Aug</i>
96-97					-0.22	-0.29	-0.37	-0.40	-0.28	-0.22	-0.09	-0.15
97-98	-0.20	-0.36	-0.34	-0.39	-0.35	-0.27	-0.32	-0.20	-0.23	-0.23	-0.27	-0.34
98-99	-0.46	-0.46	-0.40	-0.47	-0.41	-0.37	-0.42	-0.46	-0.45	-0.46	-0.43	-0.51
99-00	-0.58	-0.45	-0.42	-0.47	-0.46	-0.46	-0.46	-0.41	-0.44	-0.33	-0.33	-0.29
00-01	-0.33	-0.24	-0.25	-0.21	-0.28	-0.24	-0.26	-0.23	-0.25	-0.19	-0.26	-0.27
01-02	-0.27	-0.21	-0.25	-0.21	-0.26	-0.24	-0.24	-0.21	-0.24	-0.18	-0.20	-0.09
02-03	-0.04	-0.01	0.04	0.00	-0.01	0.01	-0.02	-0.02	-0.07	-0.14	-0.14	-0.17

Omaha

	<i>Sep</i>	<i>Oct</i>	<i>Nov</i>	<i>Dec</i>	<i>Jan</i>	<i>Feb</i>	<i>Mar</i>	<i>Apr</i>	<i>May</i>	<i>Jun</i>	<i>Jul</i>	<i>Aug</i>
88-89							-0.20	-0.16	-0.14	-0.12	-0.08	-0.05
89-90	-0.11	-0.14	-0.09	-0.10	-0.14	-0.16	-0.18	-0.17	-0.19	-0.17	-0.07	-0.05
90-91	-0.13	-0.16	-0.10	-0.14	-0.12	-0.11	-0.14	-0.09	-0.09	-0.06	-0.06	-0.13
91-92	-0.17	-0.19	-0.12	-0.17	-0.20	-0.17	-0.18	-0.10	-0.11	-0.07	-0.06	-0.06
92-93	-0.06	-0.07	-0.11	-0.21	-0.16	-0.11	-0.11	-0.10	-0.10	-0.10	-0.11	-0.08
93-94	-0.20	-0.19	-0.11	-0.14	-0.16	-0.09	-0.11	-0.08	0.00	-0.05	0.00	0.00
94-95	-0.08											
95-96												
96-97					-0.14	-0.14	-0.19	-0.20	-0.09	-0.09	-0.04	-0.17
97-98	-0.17	-0.28	-0.20	-0.22	-0.18	-0.17	-0.19	-0.10	-0.15	-0.17	-0.28	-0.27
98-99	-0.39	-0.35	-0.24	-0.26	-0.19	-0.18	-0.23	-0.23	-0.23	-0.22	-0.29	-0.44
99-00	-0.46	-0.38	-0.24	-0.24	-0.27	-0.24	-0.26	-0.22	-0.27	-0.23	-0.33	-0.32
00-01	-0.37	-0.22	-0.18	-0.16	-0.25	-0.21	-0.23	-0.20	-0.25	-0.23	-0.32	-0.28
01-02	-0.30	-0.25	-0.20	-0.15	-0.20	-0.16	-0.19	-0.15	-0.17	-0.15	-0.21	-0.10
02-03	-0.14	-0.12	-0.08	-0.10	-0.09	-0.06	-0.06	-0.06	-0.09	-0.10	-0.07	-0.08

Osceola

	<i>Sep</i>	<i>Oct</i>	<i>Nov</i>	<i>Dec</i>	<i>Jan</i>	<i>Feb</i>	<i>Mar</i>	<i>Apr</i>	<i>May</i>	<i>Jun</i>	<i>Jul</i>	<i>Aug</i>
89-90			-0.17	-0.14	-0.21	-0.21	-0.29	-0.25	-0.27	-0.25	-0.12	-0.08
90-91	-0.14	-0.18	-0.12	-0.19	-0.18	-0.17	-0.24	-0.19	-0.15	-0.10	-0.11	-0.18
91-92	-0.23	-0.24	-0.18	-0.23	-0.26	-0.25	-0.26	-0.15	-0.16	-0.13	-0.10	-0.11
92-93	-0.11	-0.13	-0.13	-0.20	-0.15	-0.10	-0.14	-0.14	-0.16	-0.15	-0.17	-0.12
93-94	-0.22	-0.20	-0.17	-0.18	-0.22	-0.14	-0.18	-0.11	-0.05	-0.07	0.25	0.00
94-95	-0.08	-0.16	-0.14	-0.14	-0.13	-0.11	-0.14	-0.10	-0.13	-0.10	-0.10	-0.13
95-96	-0.21	-0.23	-0.21	-0.25	-0.23	-0.15	-0.09	-0.18	0.00	0.04	0.95	1.03
96-97	0.52	-0.12	-0.19	-0.18	-0.19	-0.20	-0.26	-0.27	-0.17	-0.16	-0.12	-0.22
97-98	-0.26	-0.28	-0.29	-0.32	-0.28	-0.26	-0.27	-0.19	-0.22	-0.23	-0.33	-0.33
98-99	-0.47	-0.40	-0.32	-0.36	-0.27	-0.26	-0.32	-0.32	-0.31	-0.31	-0.36	-0.49
99-00	-0.53	-0.42	-0.30	-0.34	-0.35	-0.32	-0.36	-0.29	-0.32	-0.21	-0.30	-0.30
00-01	-0.31	-0.20	-0.20	-0.16	-0.25	-0.22	-0.24	-0.21	-0.26	-0.23	-0.31	-0.28
01-02	-0.30	-0.23	-0.23	-0.15	-0.20	-0.17	-0.21	-0.18	-0.21	-0.18	-0.23	-0.13
02-03	-0.13	-0.07	-0.07	-0.10	-0.09	-0.06	-0.07	-0.07	-0.11	-0.14	-0.12	-0.15

Silver Creek

	<i>Sep</i>	<i>Oct</i>	<i>Nov</i>	<i>Dec</i>	<i>Jan</i>	<i>Feb</i>	<i>Mar</i>	<i>Apr</i>	<i>May</i>	<i>Jun</i>	<i>Jul</i>	<i>Aug</i>
89-90			-0.16	-0.14	-0.20	-0.20	-0.23	-0.22	-0.22	-0.21	-0.08	-0.06
90-91	-0.10	-0.18	-0.12	-0.19	-0.16	-0.14	-0.21	-0.12	-0.10	-0.07	-0.07	-0.15
91-92	-0.20	-0.23	-0.13	-0.21	-0.23	-0.19	-0.20	-0.12	-0.13	-0.11	-0.10	-0.09
92-93	-0.10	-0.11	-0.12	-0.17	-0.11	-0.06	-0.10	-0.09	-0.12	-0.10	-0.14	-0.08
93-94	-0.18	-0.18										
94-95												
95-96												
96-97					-0.14	-0.15	-0.20	-0.23	-0.10	-0.08	-0.09	-0.20
97-98	-0.26	-0.28	-0.28	-0.26	-0.26	-0.19	-0.22	-0.19	-0.20	-0.20	-0.30	-0.30
98-99	-0.43	-0.24	-0.24	-0.29	-0.22	-0.20	-0.26	-0.28	-0.26	-0.27	-0.31	-0.46
99-00	-0.52	-0.39	-0.25	-0.29	-0.29	-0.27	-0.33	-0.24	-0.29	-0.22	-0.28	-0.28
00-01	-0.31	-0.25	-0.22	-0.15	-0.25	-0.19	-0.21	-0.19	-0.24	-0.20	-0.30	-0.28
01-02	-0.30	-0.25	-0.24	-0.16	-0.16	-0.15	-0.21	-0.17	-0.19	-0.14	-0.21	-0.12
02-03	-0.13	-0.07	-0.05	-0.09	-0.07	-0.06	-0.07	-0.06	-0.10	-0.13	-0.11	-0.12

Superior

	<i>Sep</i>	<i>Oct</i>	<i>Nov</i>	<i>Dec</i>	<i>Jan</i>	<i>Feb</i>	<i>Mar</i>	<i>Apr</i>	<i>May</i>	<i>Jun</i>	<i>Jul</i>	<i>Aug</i>
83-84					-0.13	-0.20	-0.21	-0.20	-0.09	-0.08	0.21	0.17
84-85	0.09	-0.01	0.00	-0.06	-0.01	-0.03	-0.02	-0.04	0.00	0.00	0.24	0.16
85-86	0.19	0.08	0.02	-0.01	-0.03	0.02	0.08	0.14	0.18	0.21	0.31	0.05
86-87	-0.15	-0.21	-0.13	-0.08	-0.06	-0.05	-0.04	-0.04	-0.09	-0.09	-0.09	-0.05
87-88	-0.16	-0.15	-0.10	-0.08	-0.12	-0.07	-0.11	-0.08	-0.12	-0.19	-0.35	-0.25
88-89	-0.25	-0.21	-0.20	-0.17	-0.18	-0.13	-0.17	-0.13	-0.11	-0.14	-0.05	-0.03
89-90	-0.07	-0.16	-0.08	-0.07	-0.11	-0.15	-0.19	-0.18	-0.17	-0.16	-0.02	0.02
90-91	-0.05	-0.11	-0.03	-0.09	-0.09	-0.07	-0.10	-0.03	-0.02	0.02	0.01	-0.08
91-92	-0.11	-0.12	-0.06	-0.12	-0.17	-0.13	-0.16	-0.04	-0.05	-0.02	0.02	0.01
92-93	-0.06	-0.06	-0.05	-0.09	-0.06	0.00	-0.05	-0.03	-0.05	-0.03	-0.11	-0.06
93-94	-0.11	-0.10	-0.03	-0.10	-0.08	-0.05	-0.10	-0.01	0.06	0.03	0.08	0.05
94-95	-0.07	-0.06	-0.02	-0.06	-0.06	-0.04	-0.09	-0.02	-0.02	0.01	0.02	-0.01
95-96	-0.11	-0.10	-0.10	-0.16	-0.10	-0.02	-0.01	-0.13	0.01	0.03	0.87	0.88
96-97	-0.14	0.12	-0.12	-0.15	-0.13	-0.17	-0.21	-0.24	-0.18	-0.16	-0.08	-0.28
97-98	-0.25	-0.27	-0.24	-0.28	-0.28	-0.22	-0.23	-0.18	-0.24	-0.25	-0.31	-0.30
98-99	-0.43	-0.39	-0.24	-0.26	-0.21	-0.20	-0.24	-0.26	-0.26	-0.30	-0.33	-0.47
99-00	-0.55	-0.39	-0.28	-0.31	-0.33	-0.31	-0.31	-0.28	-0.30	-0.25	-0.33	-0.32
00-01	-0.35	-0.25	-0.21	-0.18	-0.26	-0.24	-0.24	-0.20	-0.26	-0.23	-0.31	-0.27
01-02	-0.28	-0.22	-0.21	-0.13	-0.17	-0.13	-0.16	-0.15	-0.20	-0.17	-0.20	-0.10
02-03	-0.07	-0.03	0.02	-0.04	-0.04	-0.03	-0.05	-0.04	-0.07	-0.09	-0.07	-0.06

Tarnov

	<i>Sep</i>	<i>Oct</i>	<i>Nov</i>	<i>Dec</i>	<i>Jan</i>	<i>Feb</i>	<i>Mar</i>	<i>Apr</i>	<i>May</i>	<i>Jun</i>	<i>Jul</i>	<i>Aug</i>
96-97					-0.19	-0.20	-0.27	-0.27	-0.17	-0.16	-0.13	-0.23
97-98	-0.29	-0.29	-0.28	-0.32	-0.28	-0.25	-0.27	-0.19	-0.23	-0.23	-0.34	-0.34
98-99	-0.47	-0.41	-0.34	-0.36	-0.27	-0.26	-0.32	-0.33	-0.32	-0.32	-0.37	-0.50
99-00	-0.54	-0.42	-0.30	-0.34	-0.35	-0.32	-0.36	-0.30	-0.32	-0.21	-0.30	-0.30
00-01	-0.33	-0.20	-0.21	-0.16	-0.27	-0.23	-0.25	-0.21	-0.27	-0.23	-0.32	-0.28
01-02	-0.30	-0.23	-0.23	-0.15	-0.21	-0.17	-0.21	-0.18	-0.21	-0.18	-0.23	-0.15
02-03	-0.15	-0.09	-0.04	-0.10	-0.09	-0.07	-0.07	-0.06	-0.10	-0.14	-0.12	-0.15

Wakefield

	<i>Sep</i>	<i>Oct</i>	<i>Nov</i>	<i>Dec</i>	<i>Jan</i>	<i>Feb</i>	<i>Mar</i>	<i>Apr</i>	<i>May</i>	<i>Jun</i>	<i>Jul</i>	<i>Aug</i>
01-02				-0.21	-0.25	-0.21	-0.23	-0.15	-0.22	-0.22	-0.26	-0.21
02-03	-0.22	-0.06	-0.02	-0.07	-0.06	-0.04	-0.03	-0.04	-0.08	-0.13	-0.12	-0.20

Waverly

	<i>Sep</i>	<i>Oct</i>	<i>Nov</i>	<i>Dec</i>	<i>Jan</i>	<i>Feb</i>	<i>Mar</i>	<i>Apr</i>	<i>May</i>	<i>Jun</i>	<i>Jul</i>	<i>Aug</i>
91-92					-0.27	-0.26	-0.30	-0.19	-0.18	-0.15	-0.11	-0.13
92-93	-0.12	-0.20	-0.19	-0.29	-0.24	-0.19	-0.20	-0.17	-0.16	-0.17	-0.20	-0.16
93-94	-0.24	-0.19	-0.17	-0.22	-0.25	-0.16	-0.19	-0.10	-0.06	-0.07	-0.05	-0.10
94-95	-0.21	-0.24	-0.25	-0.24	-0.21	-0.18	-0.19	-0.15	-0.17	-0.14	-0.13	-0.18
95-96	-0.26	-0.24	-0.21	-0.29	-0.25	-0.16	-0.12	-0.20	-0.04	0.04	0.82	1.08
96-97	0.11	-0.18	-0.25	-0.24	-0.25	-0.24	-0.28	-0.29	-0.21	-0.20	-0.14	-0.25
97-98	-0.30	-0.29	-0.37	-0.37	-0.33	-0.30	-0.29	-0.22	-0.23	-0.26	-0.36	-0.36
98-99	-0.50	-0.49	-0.38	-0.48	-0.32	-0.30	-0.35	-0.34	-0.35	-0.35	-0.41	-0.51
99-00	-0.59	-0.50	-0.38	-0.37	-0.38	-0.35	-0.37	-0.32	-0.36	-0.29	-0.37	-0.38
00-01	-0.43	-0.32	-0.28	-0.25	-0.30	-0.28	-0.30	-0.27	-0.32	-0.27	-0.34	-0.30
01-02	-0.35	-0.31	-0.29	-0.20	-0.24	-0.20	-0.24	-0.20	-0.23	-0.23	-0.25	-0.16
02-03	-0.18	-0.11	-0.07	-0.12	-0.12	-0.10	-0.10	-0.08	-0.15	-0.19	-0.16	-0.16

Wayne

	<i>Sep</i>	<i>Oct</i>	<i>Nov</i>	<i>Dec</i>	<i>Jan</i>	<i>Feb</i>	<i>Mar</i>	<i>Apr</i>	<i>May</i>	<i>Jun</i>	<i>Jul</i>	<i>Aug</i>
99-00					-0.38	-0.37	-0.36	-0.28	-0.34	-0.23	-0.41	-0.39
00-01	-0.37	-0.38	-0.30	-0.26	-0.34	-0.28	-0.31	-0.25	-0.31	-0.29	-0.43	-0.46
01-02	-0.41	-0.32	-0.33	-0.26	-0.28	-0.26	-0.28	-0.20	-0.27	-0.27	-0.31	-0.26
02-03	-0.26	-0.11	-0.09	-0.12	-0.11	-0.09	-0.08	-0.11	-0.13	-0.18	-0.17	-0.25

Appendix B – Soybean Markets

Beatrice

	<i>Sep</i>	<i>Oct</i>	<i>Nov</i>	<i>Dec</i>	<i>Jan</i>	<i>Feb</i>	<i>Mar</i>	<i>Apr</i>	<i>May</i>	<i>Jun</i>	<i>Jul</i>	<i>Aug</i>
88-89							-0.36	-0.25	-0.23	-0.42	-0.19	-0.10
89-90	-0.21	-0.40	-0.43	-0.32	-0.42	-0.35	-0.47	-0.39	-0.48	-0.26	-0.27	-0.21
90-91	-0.41	-0.39	-0.37	-0.31	-0.36	-0.33	-0.36	-0.25	-0.25	-0.24	-0.16	-0.31
91-92	-0.35	-0.28	-0.23	-0.27	-0.33	-0.34	-0.37	-0.24	-0.35	-0.35	-0.30	-0.32
92-93	-0.33	-0.38	-0.41	-0.36	-0.39	-0.39	-0.39	-0.38	-0.41	-0.39	-0.39	-0.30
93-94	-0.36	-0.47	-0.48	-0.36	-0.37	-0.25	-0.26	-0.20	-0.16	-0.26	-0.36	-0.43
94-95	-0.43	-0.52	-0.58	-0.42	-0.40	-0.24	-0.40	-0.39	-0.43	-0.39	-0.33	-0.29
95-96	-0.44	-0.50	-0.49	-0.43	-0.51	-0.43	-0.46	-0.46	-0.47	-0.47	-0.42	-0.30
96-97	-0.35	-0.51	-0.53	-0.44	-0.39	-0.40	-0.43	-0.47	-0.38	-0.39	-0.14	0.20
97-98	-0.07	-0.51	-0.54	-0.44	-0.48	-0.42	-0.44	-0.41	-0.39	-0.39	-0.41	-0.41
98-99	-0.52	-0.54	-0.57	-0.53	-0.49	-0.42	-0.51	-0.42	-0.41	-0.37	-0.38	-0.49
99-00	-0.56	-0.60	-0.61	-0.39	-0.49	-0.45	-0.46	-0.38	-0.39	-0.28	-0.21	-0.28
00-01	-0.45	-0.43	-0.38	-0.30	-0.37	-0.33	-0.34	-0.30	-0.32	-0.34	-0.37	-0.26
01-02	-0.41	-0.48	-0.45	-0.31	-0.32	-0.35	-0.39	-0.31	-0.27	-0.26	-0.26	-0.17
02-03	-0.22	-0.31	-0.26	-0.27	-0.25	-0.26	-0.28	-0.28	-0.27	-0.28	-0.16	0.03

Belgrade

	<i>Sep</i>	<i>Oct</i>	<i>Nov</i>	<i>Dec</i>	<i>Jan</i>	<i>Feb</i>	<i>Mar</i>	<i>Apr</i>	<i>May</i>	<i>Jun</i>	<i>Jul</i>	<i>Aug</i>
01-02				-0.32	-0.35	-0.33	-0.41	-0.37	-0.35	-0.31	-0.29	-0.26
02-03	-0.37	-0.33	-0.27	-0.35	-0.28	-0.27	-0.28	-0.28	-0.29	-0.27	-0.16	-0.06

Columbus

	<i>Sep</i>	<i>Oct</i>	<i>Nov</i>	<i>Dec</i>	<i>Jan</i>	<i>Feb</i>	<i>Mar</i>	<i>Apr</i>	<i>May</i>	<i>Jun</i>	<i>Jul</i>	<i>Aug</i>
88-89							-0.34	-0.25	-0.24	-0.37	-0.17	-0.05
89-90	-0.15	-0.38	-0.40	-0.29	-0.40	-0.35	-0.45	-0.37	-0.47	-0.25	-0.26	-0.23
90-91	-0.41	-0.37	-0.35	-0.28	-0.33	-0.28	-0.33	-0.21	-0.21	-0.19	-0.16	-0.27
91-92	-0.33	-0.28	-0.25	-0.21	-0.32	-0.32	-0.35	-0.21	-0.32	-0.31	-0.26	-0.29
92-93	-0.32	-0.37	-0.36	-0.33	-0.37	-0.36	-0.36	-0.32	-0.37	-0.36	-0.36	-0.22
93-94	-0.31	-0.40	-0.40	-0.29	-0.32	-0.21	-0.21	-0.19	-0.15	-0.26	-0.35	-0.43
94-95	-0.44	-0.46	-0.50	-0.36	-0.41	-0.39	-0.46	-0.35	-0.45	-0.37	-0.32	-0.28
95-96	-0.45	-0.47	-0.43	-0.42	-0.52	-0.42	-0.45	-0.42	-0.44	-0.44	-0.54	-0.30
96-97	-0.37	-0.45	-0.38	-0.34	-0.32	-0.37	-0.41	-0.34	-0.31	-0.31	-0.12	0.26
97-98	0.02	-0.44	-0.46	-0.38	-0.40	-0.39	-0.40	-0.39	-0.38	-0.37	-0.36	-0.39
98-99	-0.46	-0.52	-0.50	-0.44	-0.40	-0.37	-0.47	-0.44	-0.39	-0.35	-0.38	-0.45
99-00	-0.53	-0.56	-0.51	-0.40	-0.46	-0.43	-0.46	-0.39	-0.40	-0.24	-0.24	-0.27
00-01	-0.43	-0.41	-0.36	-0.30	-0.36	-0.36	-0.33	-0.29	-0.32	-0.33	-0.36	-0.23
01-02	-0.34	-0.43	-0.42	-0.30	-0.33	-0.30	-0.38	-0.34	-0.31	-0.28	-0.27	-0.22
02-03	-0.35	-0.33	-0.31	-0.32	-0.26	-0.25	-0.26	-0.26	-0.26	-0.25	-0.14	-0.04

Duncan

	<i>Sep</i>	<i>Oct</i>	<i>Nov</i>	<i>Dec</i>	<i>Jan</i>	<i>Feb</i>	<i>Mar</i>	<i>Apr</i>	<i>May</i>	<i>Jun</i>	<i>Jul</i>	<i>Aug</i>
96-97					-0.32	-0.37	-0.41	-0.34	-0.31	-0.31	-0.11	0.26
97-98	0.02	-0.44	-0.46	-0.38	-0.40	-0.39	-0.40	-0.39	-0.38	-0.37	-0.25	-0.25
98-99	-0.46	-0.52	-0.50	-0.45	-0.40	-0.37	-0.47	-0.44	-0.39	-0.35	-0.38	-0.45
99-00	-0.53	-0.55	-0.51	-0.39	-0.46	-0.44	-0.47	-0.39	-0.40	-0.24	-0.24	-0.27
00-01	-0.43	-0.40	-0.36	-0.30	-0.36	-0.36	-0.33	-0.29	-0.32	-0.33	-0.36	-0.23
01-02	-0.34	-0.43	-0.42	-0.30	-0.33	-0.30	-0.38	-0.34	-0.31	-0.29	-0.27	-0.22
02-03	-0.35	-0.32	-0.26	-0.33	-0.26	-0.25	-0.26	-0.26	-0.26	-0.25	-0.14	-0.04

Fremont

	<i>Sep</i>	<i>Oct</i>	<i>Nov</i>	<i>Dec</i>	<i>Jan</i>	<i>Feb</i>	<i>Mar</i>	<i>Apr</i>	<i>May</i>	<i>Jun</i>	<i>Jul</i>	<i>Aug</i>
88-89												0.04
89-90	-0.03	-0.21	-0.26	-0.16	-0.27	-0.20	-0.30	-0.23	-0.32	-0.11	-0.11	-0.09
90-91	-0.25	-0.20	-0.21	-0.13	-0.20	-0.16	-0.21	-0.11	-0.13	-0.10	-0.10	-0.21
91-92	-0.26	-0.13	-0.12	-0.09	-0.23	-0.23	-0.25	-0.11	-0.20	-0.19	-0.09	-0.14
92-93	-0.19	-0.25	-0.28	-0.23	-0.27	-0.24	-0.25	-0.23	-0.24	-0.24	-0.26	-0.22
93-94	-0.30	-0.38	-0.35	-0.20	-0.33	-0.20	-0.20	-0.19	-0.12	-0.20	-0.29	-0.41
94-95	-0.35	-0.40	-0.38	-0.26	-0.33	-0.27	-0.37	-0.29	-0.35	-0.28	-0.22	-0.23
95-96	-0.39	-0.37	-0.29	-0.32	-0.37	-0.25	-0.25	-0.23	-0.22	-0.26	-0.19	-0.26
96-97	-0.30	-0.44	-0.33	-0.28	-0.29	-0.39	-0.40	-0.31	-0.28	-0.29	0.00	0.29
97-98	0.25	-0.38	-0.36	-0.33	-0.36	-0.36	-0.37	-0.37	-0.34	-0.36	-0.37	-0.36
98-99	-0.48	-0.55	-0.46	-0.43	-0.42	-0.41	-0.51	-0.45	-0.43	-0.37	-0.41	-0.55
99-00	-0.59	-0.60	-0.45	-0.43	-0.52	-0.45	-0.47	-0.39	-0.40	-0.27	-0.29	-0.35
00-01	-0.46	-0.40	-0.33	-0.32	-0.39	-0.36	-0.34	-0.27	-0.29	-0.29	-0.32	-0.14
01-02	-0.25	-0.44	-0.38	-0.28	-0.35	-0.33	-0.37	-0.30	-0.25	-0.21	-0.20	-0.11
02-03	-0.27	-0.30	-0.21	-0.32	-0.27	-0.24	-0.22	-0.23	-0.21	-0.16	-0.11	0.03

Grand Island

	<i>Sep</i>	<i>Oct</i>	<i>Nov</i>	<i>Dec</i>	<i>Jan</i>	<i>Feb</i>	<i>Mar</i>	<i>Apr</i>	<i>May</i>	<i>Jun</i>	<i>Jul</i>	<i>Aug</i>
90-91	-0.40	-0.38	-0.47	-0.30	-0.40	-0.31	-0.37	-0.19	-0.27	-0.23	-0.24	-0.35
91-92	-0.35	-0.33	-0.29	-0.29	-0.31	-0.38	-0.41	-0.28	-0.39	-0.39	-0.27	-0.33
92-93	-0.34	-0.35	-0.43	-0.35	-0.40	-0.36	-0.33	-0.37	-0.39	-0.37	-0.38	-0.19
93-94	-0.35	-0.46	-0.46	-0.40	-0.39	-0.25	-0.22	-0.24	-0.17	-0.30	-0.35	-0.39
94-95	-0.43			-0.37	-0.46	-0.35	-0.46	-0.41	-0.42	-0.37	-0.30	-0.25
95-96	-0.47	-0.48	-0.39		-0.57	-0.45	-0.47	-0.48	-0.53	-0.51	-0.45	-0.37
96-97	-0.47	-0.48	-0.41	-0.37	-0.34	-0.38	-0.43	-0.37	-0.34	-0.44	-0.11	0.15
97-98	-0.04	-0.49	-0.46	-0.39	-0.39	-0.34	-0.37	-0.37	-0.36	-0.39	-0.44	-0.44
98-99	-0.54	-0.53	-0.55	-0.43	-0.40	-0.33	-0.49	-0.40	-0.38	-0.34	-0.37	-0.40
99-00	-0.48	-0.52	-0.48	-0.37	-0.46	-0.42	-0.40	-0.35	-0.35	-0.26	-0.22	-0.25
00-01	-0.46	-0.36	-0.35	-0.26	-0.33	-0.32	-0.32	-0.30	-0.29	-0.29	-0.29	-0.24
01-02	-0.29	-0.38	-0.38	-0.28	-0.29	-0.28	-0.33	-0.32	-0.34	-0.30	-0.25	-0.11
02-03	-0.31	-0.29	-0.22	-0.29	-0.25	-0.27	-0.28	-0.23	-0.25	-0.26	-0.12	0.03

Greenwood

	<i>Sep</i>	<i>Oct</i>	<i>Nov</i>	<i>Dec</i>	<i>Jan</i>	<i>Feb</i>	<i>Mar</i>	<i>Apr</i>	<i>May</i>	<i>Jun</i>	<i>Jul</i>	<i>Aug</i>
88-89							-0.36	-0.27	-0.25	-0.38	-0.18	-0.11
89-90	-0.21	-0.41	-0.41	-0.31	-0.42	-0.36	-0.47	-0.40	-0.50	-0.27	-0.27	-0.23
90-91	-0.42	-0.39	-0.38	-0.31	-0.36	-0.31	-0.36	-0.25	-0.26	-0.24	-0.23	-0.30
91-92	-0.37	-0.32	-0.27	-0.24	-0.38	-0.38	-0.40	-0.28	-0.35	-0.35	-0.26	-0.30
92-93	-0.37	-0.40	-0.44	-0.38	-0.42	-0.39	-0.40	-0.38	-0.41	-0.40	-0.38	-0.25
93-94	-0.33	-0.44	-0.40	-0.36	-0.36	-0.23	-0.23	-0.18	-0.15	-0.30	-0.38	-0.43
94-95	-0.42	-0.53	-0.56	-0.44	-0.45	-0.40	-0.49	-0.42	-0.46	-0.39	-0.33	-0.28
95-96	-0.47	-0.46	-0.40	-0.43	-0.49	-0.42	-0.42	-0.40	-0.40	-0.45	-0.37	-0.27
96-97	-0.37	-0.45	-0.36	-0.34	-0.31	-0.36	-0.40	-0.37	-0.27	-0.29	-0.09	0.29
97-98	0.36	-0.44	-0.45	-0.38	-0.39	-0.37	-0.40	-0.37	-0.37	-0.39	-0.38	-0.36
98-99	-0.45	-0.57	-0.52	-0.50	-0.44	-0.40	-0.52	-0.43	-0.41	-0.36	-0.40	-0.52
99-00	-0.56	-0.62	-0.55	-0.42	-0.52	-0.46	-0.48	-0.38	-0.41	-0.27	-0.26	-0.30
00-01	-0.46	-0.41	-0.37	-0.36	-0.36	-0.36	-0.33	-0.29	-0.32	-0.34	-0.37	-0.24
01-02	-0.34	-0.47	-0.42	-0.30	-0.35	-0.34	-0.40	-0.35	-0.30	-0.28	-0.26	-0.17
02-03	-0.30	-0.32	-0.26	-0.36	-0.29	-0.26	-0.25	-0.25	-0.27	-0.21	-0.20	0.00

Holdrege

	<i>Sep</i>	<i>Oct</i>	<i>Nov</i>	<i>Dec</i>	<i>Jan</i>	<i>Feb</i>	<i>Mar</i>	<i>Apr</i>	<i>May</i>	<i>Jun</i>	<i>Jul</i>	<i>Aug</i>
96-97					-0.35	-0.45	-0.49	-0.52	-0.38	-0.33	-0.31	0.05
97-98	-0.26	-0.50	-0.55	-0.49	-0.49	-0.46	-0.46	-0.45	-0.45	-0.45	-0.34	-0.35
98-99	-0.52	-0.51	-0.57	-0.52	-0.47	-0.48	-0.52	-0.52	-0.54	-0.46	-0.41	-0.48
99-00	-0.56	-0.54	-0.59	-0.41	-0.48	-0.49	-0.50	-0.40	-0.41	-0.30	-0.28	-0.27
00-01	-0.43	-0.38	-0.41	-0.30	-0.37	-0.33	-0.34	-0.33	-0.34	-0.32	-0.32	-0.29
01-02	-0.32	-0.40	-0.42	-0.30	-0.28	-0.27	-0.35	-0.34	-0.35	-0.29	-0.23	-0.16
02-03	-0.32	-0.30	-0.23	-0.29	-0.22	-0.26	-0.29	-0.24	-0.27	-0.29	-0.16	-0.06

Lexington

	<i>Sep</i>	<i>Oct</i>	<i>Nov</i>	<i>Dec</i>	<i>Jan</i>	<i>Feb</i>	<i>Mar</i>	<i>Apr</i>	<i>May</i>	<i>Jun</i>	<i>Jul</i>	<i>Aug</i>
90-91								-0.28	-0.25	-0.21	-0.16	-0.36
91-92	-0.32	-0.30	-0.23	-0.20	-0.32	-0.36	-0.44	-0.38	-0.30	-0.30	-0.28	-0.29
92-93	-0.34	-0.36	-0.41	-0.35	-0.39	-0.40	-0.38	-0.40	-0.44	-0.44	-0.40	-0.34
93-94	-0.41	-0.40	-0.46	-0.39	-0.35	-0.31	-0.35	-0.31	-0.18	-0.23	-0.34	-0.46
94-95	-0.41	-0.46	-0.55	-0.28	-0.46	-0.36	-0.47	-0.45	-0.54	-0.47	-0.50	-0.52
95-96	-0.53	-0.48	-0.52	-0.40	-0.50	-0.42	-0.44	-0.39	-0.54	-0.48	-0.47	-0.47
96-97	-0.43	-0.42	-0.49	-0.38	-0.28	-0.46	-0.48	-0.69	-0.44	-0.48	-0.20	
97-98	-0.45	-0.48	-0.57	-0.47	-0.40	-0.40	-0.43	-0.42	-0.42	-0.45	-0.57	-0.46
98-99	-0.55	-0.50	-0.45	-0.51	-0.52	-0.52	-0.56	-0.58	-0.50	-0.46	-0.42	-0.53
99-00	-0.55	-0.52	-0.55	-0.35	-0.39	-0.34	-0.45	-0.46	-0.56	-0.31	-0.25	-0.28
00-01	-0.47	-0.37	-0.36	-0.34	-0.43	-0.38	-0.38	-0.33	-0.34	-0.32	-0.34	-0.27
01-02	-0.33	-0.40	-0.41	-0.29	-0.28	-0.23	-0.36	-0.32	-0.35	-0.32	-0.33	-0.23
02-03	-0.31	-0.29	-0.30	-0.30	-0.28	-0.29	-0.28	-0.25	-0.05	-0.30	-0.14	-0.03

Manley

	<i>Sep</i>	<i>Oct</i>	<i>Nov</i>	<i>Dec</i>	<i>Jan</i>	<i>Feb</i>	<i>Mar</i>	<i>Apr</i>	<i>May</i>	<i>Jun</i>	<i>Jul</i>	<i>Aug</i>
96-97					-0.31	-0.36	-0.40	-0.46	-0.27	-0.29	-0.09	0.29
97-98	0.11	-0.44	-0.43	-0.38	-0.39	-0.37	-0.40	-0.37	-0.37	-0.39	-0.25	-0.24
98-99	-0.45	-0.57	-0.52	-0.50	-0.44	-0.40	-0.52	-0.43	-0.41	-0.36	-0.40	-0.52
99-00	-0.56	-0.62	-0.55	-0.42	-0.52	-0.46	-0.48	-0.38	-0.41	-0.27	-0.26	-0.30
00-01	-0.46	-0.40	-0.37	-0.36	-0.36	-0.36	-0.33	-0.29	-0.32	-0.33	-0.39	-0.22
01-02	-0.34	-0.46	-0.42	-0.30	-0.35	-0.34	-0.41	-0.39	-0.30	-0.28	-0.26	-0.17
02-03	-0.29	-0.32	-0.26	-0.36	-0.29	-0.26	-0.25	-0.25	-0.28	-0.21	-0.20	0.00

Murdock

	<i>Sep</i>	<i>Oct</i>	<i>Nov</i>	<i>Dec</i>	<i>Jan</i>	<i>Feb</i>	<i>Mar</i>	<i>Apr</i>	<i>May</i>	<i>Jun</i>	<i>Jul</i>	<i>Aug</i>
96-97					-0.31	-0.36	-0.40	-0.46	-0.27	-0.29	-0.09	0.29
97-98	0.09	-0.44	-0.43	-0.38	-0.38	-0.37	-0.40	-0.37	-0.37	-0.39	-0.25	-0.24
98-99	-0.45	-0.57	-0.52	-0.50	-0.44	-0.40	-0.52	-0.43	-0.41	-0.36	-0.40	-0.52
99-00	-0.56	-0.62	-0.55	-0.42	-0.52	-0.46	-0.48	-0.38	-0.41	-0.27	-0.26	-0.30
00-01	-0.46	-0.40	-0.37	-0.36	-0.36	-0.36	-0.31	-0.28	-0.32	-0.34	-0.37	-0.24
01-02	-0.34	-0.46	-0.42	-0.31	-0.35	-0.34	-0.41	-0.35	-0.30	-0.28	-0.26	-0.17
02-03	-0.29	-0.32	-0.26	-0.36	-0.29	-0.26	-0.25	-0.25	-0.28	-0.21	-0.20	0.00

Omaha

	<i>Sep</i>	<i>Oct</i>	<i>Nov</i>	<i>Dec</i>	<i>Jan</i>	<i>Feb</i>	<i>Mar</i>	<i>Apr</i>	<i>May</i>	<i>Jun</i>	<i>Jul</i>	<i>Aug</i>
88-89							-0.19	-0.13	-0.15	-0.30	0.00	0.14
89-90	-0.02	-0.27	-0.29	-0.21	-0.29	-0.20	-0.30	-0.26	-0.38	-0.16	-0.14	-0.12
90-91	-0.29	-0.26	-0.30	-0.21	-0.21	-0.19	-0.21	-0.11	-0.13	-0.10	-0.09	-0.18
91-92	-0.21	-0.18	-0.15	-0.12	-0.20	-0.20	-0.24	-0.12	-0.19	-0.19	-0.15	-0.15
92-93	-0.12	-0.19	-0.24	-0.18	-0.22	-0.22	-0.24	-0.20	-0.23	-0.21	-0.29	-0.19
93-94	-0.26	-0.38	-0.36	-0.25	-0.29	-0.12	-0.14	-0.08	-0.05	-0.13	-0.27	-0.26
94-95	-0.25	-0.31	-0.42	-0.17	-0.27	-0.19	-0.28	-0.26	-0.27		-0.17	-0.15
95-96	-0.40	-0.40	-0.30	-0.24	-0.39	-0.24	-0.26	-0.26	-0.29	-0.28	-0.25	-0.12
96-97	-0.11	-0.24	-0.14	-0.13	-0.13	-0.21	-0.28	-0.28	-0.17	-0.18	0.02	0.47
97-98	0.38	-0.30	-0.31	-0.20	-0.22	-0.22	-0.23	-0.18	-0.16	-0.18	-0.22	-0.22
98-99	-0.25	-0.37	-0.31	-0.29	-0.20	-0.23	-0.29	-0.29	-0.26	-0.19	-0.23	-0.34
99-00	-0.40	-0.44	-0.39	-0.24	-0.32	-0.30	-0.31	-0.19	-0.25	-0.15	-0.12	-0.18
00-01	-0.29	-0.23	-0.24	-0.19	-0.24	-0.18	-0.18	-0.14	-0.10	-0.17	-0.18	-0.01
01-02	-0.13	-0.28	-0.24	-0.12	-0.20	-0.15	-0.23	-0.17	-0.12	-0.12	-0.06	-0.04
02-03	-0.16	-0.17	-0.10	-0.12	-0.06	-0.06	-0.07	-0.08	-0.09	-0.01	0.03	0.12

Osceola

	<i>Sep</i>	<i>Oct</i>	<i>Nov</i>	<i>Dec</i>	<i>Jan</i>	<i>Feb</i>	<i>Mar</i>	<i>Apr</i>	<i>May</i>	<i>Jun</i>	<i>Jul</i>	<i>Aug</i>
89-90			-0.41	-0.29	-0.40	-0.35	-0.45	-0.37	-0.54	-0.22	-0.26	-0.23
90-91	-0.41	-0.37	-0.35	-0.28	-0.33	-0.28	-0.33	-0.21	-0.21	-0.19	-0.16	-0.27
91-92	-0.33	-0.27	-0.25	-0.21							-0.25	-0.29
92-93	-0.32	-0.37	-0.38	-0.34	-0.38	-0.36	-0.36	-0.34	-0.38	-0.37	-0.36	-0.22
93-94	-0.32	-0.40	-0.40	-0.29	-0.33	-0.22	-0.21	-0.19	-0.15	-0.27	-0.35	-0.42
94-95	-0.44	-0.46	-0.50	-0.37	-0.42	-0.40	-0.46	-0.37	-0.45	-0.38	-0.32	-0.28
95-96	-0.46	-0.47	-0.43	-0.43	-0.52	-0.40	-0.45	-0.42	-0.44	-0.46	-0.39	-0.30
96-97	-0.37	-0.43	-0.38	-0.33	-0.32	-0.37	-0.41	-1.53	-0.31	-0.34	-0.11	0.26
97-98	0.02	-0.44	-0.46	-0.38	-0.40	-0.39	-0.40	-0.39	-0.38	-0.37	-0.25	-0.25
98-99	-0.46	-0.63	-0.49	-0.45	-0.40	-0.37	-0.47	-0.44	-0.39	-0.35	-0.38	-0.45
99-00	-0.53	-0.56	-0.51	-0.39	-0.46	-0.44	-0.47	-0.39	-0.40	-0.24	-0.24	-0.27
00-01	-0.43	-0.40	-0.35	-0.30	-0.36	-0.36	-0.32	-0.29	-0.31	-0.33	-0.36	-0.23
01-02	-0.34	-0.42	-0.39	-0.30	-0.32	-0.28	-0.36	-0.32	-0.29	-0.29	-0.27	-0.22
02-03	-0.34	-0.31	-0.26	-0.33	-0.26	-0.25	-0.26	-0.26	-0.26	-0.25	-0.14	-0.04

Plymouth

	<i>Sep</i>	<i>Oct</i>	<i>Nov</i>	<i>Dec</i>	<i>Jan</i>	<i>Feb</i>	<i>Mar</i>	<i>Apr</i>	<i>May</i>	<i>Jun</i>	<i>Jul</i>	<i>Aug</i>
88-89							-0.34	-0.21	-0.21	-0.40	-0.18	-0.10
89-90	-0.19	-0.40	-0.41	-0.33	-0.42	-0.26	-0.45	-0.38	-0.49	-0.25	-0.26	-0.23
90-91	-0.41	-0.39	-0.38	-0.29	-0.36	-0.31	-0.37	-0.23	-0.23	-0.20	-0.16	-0.29
91-92	-0.32	-0.25	-0.20	-0.26	-0.33	-0.32	-0.36	-0.24	-0.34	-0.32	-0.31	-0.33
92-93	-0.34	-0.38	-0.40	-0.35	-0.40	-0.41	-0.40	-0.37	-0.41	-0.38	-0.41	-0.32
93-94	-0.36	-0.44	-0.47	-0.38	-0.33	-0.24	-0.24	-0.19	-0.18	-0.25	-0.36	-0.42
94-95	-0.45	-0.53	-0.61	-0.42	-0.42	-0.33	-0.43	-0.37	-0.44	-0.40	-0.36	-0.32
95-96	-0.46	-0.50	-0.49	-0.43	-0.52	-0.43	-0.46	-0.45	-0.49	-0.49	-0.42	
96-97	-0.50	-0.52	-0.49	-0.48	-0.40	-0.38	-0.40	-0.33	-0.35	-0.29	-0.18	0.19
97-98	-0.02	-0.43	-0.47		-0.44	-0.37						
98-99												
99-00	-0.54	-0.58	-0.57	-0.41	-0.48	-0.45	-0.48	-0.40	-0.41	-0.30	-0.22	-0.29
00-01	-0.49	-0.42	-0.36	-0.30	-0.35	-0.33	-0.33	-0.29	-0.32	-0.34	-0.38	-0.24
01-02	-0.32	-0.43	-0.41	-0.25	-0.25	-0.22	-0.30	-0.29	-0.27	-0.25	-0.28	-0.19
02-03	-0.26	-0.30	-0.25	-0.25	-0.21	-0.27	-0.29	-0.27	-0.26	-0.24	-0.17	0.01

Schuyler

	<i>Sep</i>	<i>Oct</i>	<i>Nov</i>	<i>Dec</i>	<i>Jan</i>	<i>Feb</i>	<i>Mar</i>	<i>Apr</i>	<i>May</i>	<i>Jun</i>	<i>Jul</i>	<i>Aug</i>
01-02				-0.26	-0.30	-0.26	-0.34	-0.32	-0.29	-0.27	-0.25	-0.18
02-03	-0.33	-0.31	-0.23	-0.32	-0.25	-0.24	-0.25	-0.25	-0.25	-0.25	-0.14	-0.04

Silver Creek

	Sep	Oct	Nov	Dec	Jan	Feb	Mar	Apr	May	Jun	Jul	Aug
89-90			-0.41	-0.29	-0.40	-0.33	-0.43	-0.38	-0.52	-0.24	-0.26	-0.18
90-91	-0.39	-0.35	-0.34	-0.27	-0.31	-0.25	-0.29	-0.18	-0.19	-0.16	-0.11	-0.25
91-92	-0.30	-0.26	-0.21	-0.19	-0.32	-0.28	-0.32	-0.18	-0.29	-0.28	-0.24	-0.28
92-93	-0.29	-0.34	-0.32	-0.34	-0.35	-0.35	-0.35	-0.29	-0.35	-0.32	-0.37	-0.22
93-94	-0.35	-0.41										
94-95												
95-96												
96-97					-0.25	-0.29	-0.35	-0.41	-0.30	-0.24	-0.09	0.07
97-98	-0.16	-0.46	-0.49	-0.41	-0.41	-0.34	-0.38	-0.36	-0.36	-0.46	-0.34	-0.32
98-99	-0.59	-0.49	-0.45	-0.37	-0.37	-0.38	-0.39	-0.44	-0.45	-0.35	-0.33	-0.53
99-00	-0.53	-0.52	-0.52	-0.40	-0.47	-0.43	-0.45	-0.37	-0.41	-0.28	-0.21	-0.35
00-01	-0.45	-0.40	-0.39	-0.29	-0.37	-0.29	-0.30	-0.30	-0.30	-0.30	-0.31	-0.25
01-02	-0.25	-0.40	-0.48	-0.32	-0.25	-0.25	-0.33	-0.33	-0.27	-0.23	-0.24	-0.15
02-03	-0.31	-0.30	-0.21	-0.32	-0.24	-0.24	-0.26	-0.24	-0.24	-0.19	-0.13	-0.02

Superior

	Sep	Oct	Nov	Dec	Jan	Feb	Mar	Apr	May	Jun	Jul	Aug
88-89							-0.35	-0.28	-0.31	-0.50	-0.22	-0.23
89-90	-0.50	-0.42	-0.41	-0.25	-0.40	-0.31	-0.45	-0.39	-0.47	-0.22	-0.18	-0.14
90-91	-0.41	-0.33	-0.33	-0.27	-0.30	-0.23	-0.30	-0.19	-0.19	-0.15	-0.12	-0.25
91-92	-0.25	-0.21	-0.19	-0.21	-0.26	-0.24	-0.29	-0.19	-0.26	-0.24	-0.24	-0.26
92-93	-0.27	-0.36	-0.38	-0.28	-0.30	-0.27	-0.25	-0.25	-0.26	-0.27	-0.34	-0.28
93-94	-0.38	-0.47	-0.43	-0.33	-0.36	-0.26	-0.23	-0.21	-0.17	-0.26	-0.40	-0.39
94-95	-0.27	-0.36	-0.47	-0.39	-0.47	-0.38	-0.27	-0.42	-0.50	-0.47	-0.39	-0.33
95-96	-0.45	-0.49	-0.50	-0.43	-0.43	-0.38	-0.35	-0.36	-0.45	-0.44	-0.43	-0.40
96-97	-0.43	-0.41	-0.40	-0.42	-0.38	-0.41	-0.44	-0.46	-0.41	-0.43	-0.54	0.12
97-98	-0.34	-0.38	-0.36	-0.32	-0.41	-0.36	-0.37	-0.37	-0.36	-0.36	-0.21	-0.34
98-99	-0.55	-0.53	-0.56	-0.37	-0.40	-0.35	-0.39	-0.40	-0.50	-0.50	-0.45	-0.51
99-00	-0.50	-0.48	-0.49	-0.38	-0.40	-0.39	-0.44	-0.41	-0.52	-0.40	-0.25	-0.32
00-01	-0.47	-0.38	-0.44	-0.26	-0.35	-0.38	-0.36	-0.35	-0.34	-0.31	-0.36	-0.38
01-02	-0.38	-0.36	-0.33	-0.28	-0.26	-0.27	-0.35	-0.35	-0.36	-0.30	-0.38	-0.15
02-03	-0.30	-0.27	-0.28	-0.25	-0.19	-0.22	-0.20	-0.17	-0.20	-0.25	-0.15	-0.25

Tarnov

	Sep	Oct	Nov	Dec	Jan	Feb	Mar	Apr	May	Jun	Jul	Aug
96-97					-0.32	-0.37	-0.42	-0.34	-0.31	-0.33	-0.34	0.24
97-98	0.00	-0.46	-0.47	-0.40	-0.41	-0.39	-0.41	-0.40	-0.39	-0.37	-0.29	-0.26
98-99	-0.47	-0.54	-0.50	-0.45	-0.42	-0.38	-0.48	-0.45	-0.40	-0.36	-0.39	-0.46
99-00	-0.55	-0.57	-0.53	-0.40	-0.48	-0.45	-0.48	-0.40	-0.41	-0.25	-0.25	-0.28
00-01	-0.44	-0.40	-0.36	-0.30	-0.37	-0.36	-0.33	-0.31	-0.33	-0.33	-0.36	-0.25
01-02	-0.35	-0.43	-0.44	-0.30	-0.33	-0.30	-0.38	-0.34	-0.31	-0.29	-0.27	-0.22
02-03	-0.35	-0.32	-0.26	-0.33	-0.26	-0.25	-0.26	-0.26	-0.26	-0.25	-0.14	-0.09

Waverly

	<i>Sep</i>	<i>Oct</i>	<i>Nov</i>	<i>Dec</i>	<i>Jan</i>	<i>Feb</i>	<i>Mar</i>	<i>Apr</i>	<i>May</i>	<i>Jun</i>	<i>Jul</i>	<i>Aug</i>
90-91								-0.25	-0.26	-0.24	-0.23	-0.30
91-92	-0.36	-0.30	-0.26	-0.24	-0.38	-0.38	-0.37	-0.28	-0.34	-0.35	-0.26	-0.30
92-93	-0.38	-0.40	-0.48	-0.39	-0.42	-0.39	-0.40	-0.45	-0.41	-0.40	-0.38	-0.25
93-94	-0.35	-0.41	-0.42	-0.33	-0.38	-0.24	-0.23	-0.22	-0.16	-0.29	-0.38	-0.43
94-95	-0.42	-0.45	-0.56	-0.46	-0.46	-0.40	-0.49	-0.42	-0.46	-0.39	-0.33	-0.28
95-96	-0.45	-0.46	-0.39	-0.43	-0.50	-0.42	-0.42	-0.40	-0.40	-0.44	-0.42	-0.27
96-97	-0.35	-0.45	-0.36	-0.36	-0.31	-0.36	-0.40	-0.43	-0.27	-0.30	-0.09	0.29
97-98	0.34	-0.43	-0.44	-0.37	-0.38	-0.39	-0.40	-0.37	-0.36	-0.37	-0.27	-0.23
98-99	-0.45	-0.55	-0.52	-0.51	-0.44	-0.40	-0.52	-0.43	-0.42	-0.36	-0.40	-0.50
99-00	-0.55	-0.59	-0.53	-0.41	-0.51	-0.46	-0.47	-0.38	-0.40	-0.27	-0.25	-0.28
00-01	-0.46	-0.40	-0.36	-0.29	-0.38	-0.35	-0.32	-0.28	-0.32	-0.33	-0.36	-0.25
01-02	-0.33	-0.48	-0.42	-0.30	-0.35	-0.34	-0.41	-0.35	-0.30	-0.29	-0.26	-0.20
02-03	-0.31	-0.31	-0.28	-0.36	-0.28	-0.27	-0.26	-0.26	-0.26	-0.21	-0.19	-0.01

Wayne

	<i>Sep</i>	<i>Oct</i>	<i>Nov</i>	<i>Dec</i>	<i>Jan</i>	<i>Feb</i>	<i>Mar</i>	<i>Apr</i>	<i>May</i>	<i>Jun</i>	<i>Jul</i>	<i>Aug</i>
88-89							-0.48	-0.38	-0.39	-0.55	-0.33	-0.21
89-90	-0.31	-0.49	-0.52	-0.45	-0.56	-0.49	-0.56	-0.50	-0.60	-0.40	-0.39	-0.35
90-91	-0.50	-0.51	-0.46	-0.38	-0.43	-0.35	-0.45	-0.34	-0.37	-0.37	-0.32	-0.42
91-92	-0.50	-0.42	-0.38	-0.35	-0.50	-0.50	-0.51	-0.38	-0.49	-0.47	-0.38	-0.39
92-93	-0.38	-0.50	-0.58	-0.51	-0.55	-0.53	-0.53	-0.51	-0.50	-0.53	-0.54	-0.38
93-94	-0.49	-0.54	-0.51	-0.42	-0.53	-0.38	-0.38	-0.35	-0.30	-0.46	-0.55	-0.59
94-95	-0.55	-0.64	-0.60	-0.51	-0.57	-0.52	-0.63	-0.54	-0.60	-0.53	-0.50	-0.48
95-96	-0.61	-0.61	-0.55	-0.55	-0.72	-0.60	-0.59	-0.54	-0.54	-0.54	-0.49	-0.37
96-97	-0.81	-0.60	-0.48	-0.41	-0.39	-0.44	-0.56	-0.58	-0.43	-0.49	-0.27	0.10
97-98	0.26	-0.57	-0.54	-0.53	-0.49	-0.51	-0.45	-0.48	-0.44	-0.45	-0.49	-0.43
98-99	-0.49	-0.69	-0.62	-0.56	-0.55	-0.48	-0.61	-0.57	-0.50	-0.50	-0.54	-0.67
99-00	-0.71	-0.72	-0.63	-0.55	-0.66	-0.60	-0.61	-0.54	-0.52	-0.40	-0.42	-0.46
00-01	-0.61	-0.57	-0.48	-0.47	-0.56	-0.51	-0.48	-0.41	-0.44	-0.47	-0.49	-0.33
01-02	-0.46	-0.61	-0.55	-0.47	-0.52	-0.48	-0.54	-0.49	-0.43	-0.46	-0.39	-0.33
02-03	-0.43	-0.47	-0.38	-0.47								

Appendix C – Wheat Markets

Beatrice

	<i>Jul</i>	<i>Aug</i>	<i>Sep</i>	<i>Oct</i>	<i>Nov</i>	<i>Dec</i>	<i>Jan</i>	<i>Feb</i>	<i>Mar</i>	<i>Apr</i>	<i>May</i>	<i>Jun</i>
93-94	-0.19	-0.23	-0.25	-0.28	-0.22	-0.12	-0.22	-0.26	-0.21	-0.21	-0.14	-0.22
94-95	-0.27	-0.27	-0.31	-0.32	-0.20	-0.10	-0.13	-0.22	-0.10	-0.12	-0.02	-0.10
95-96	-0.20	-0.23	-0.28	-0.32	-0.29	-0.07	-0.11	-0.26	0.04	-0.15	-0.08	-0.39
96-97	-0.27	-0.24	-0.27	-0.22	-0.20	0.03	-0.09	-0.17	-0.10	-0.26	-0.16	-0.22
97-98	-0.33	-0.31	-0.38	-0.41	-0.35	-0.33	-0.23	-0.20	-0.25	-0.13	-0.25	-0.29
98-99	-0.42	-0.46	-0.66	-0.58	-0.41	-0.40	-0.37	-0.38	-0.49	-0.45	-0.50	-0.39
99-00	-0.51	-0.59	-0.70	-0.64	-0.54	-0.51	-0.52	-0.51	-0.58	-0.48	-0.57	-0.49
00-01	-0.34	-0.26	-0.36	-0.26	-0.15	-0.18	-0.15	-0.16	-0.20	-0.14	-0.28	-0.26
01-02	-0.31	-0.23	-0.30	-0.23	-0.16	-0.11	-0.09	-0.09	-0.14	-0.11	-0.15	-0.12
02-03	-0.11	-0.09	-0.03	0.00	0.03	0.10	0.11	0.06	0.06	0.05	0.01	-0.19

Brule

	<i>Jul</i>	<i>Aug</i>	<i>Sep</i>	<i>Oct</i>	<i>Nov</i>	<i>Dec</i>	<i>Jan</i>	<i>Feb</i>	<i>Mar</i>	<i>Apr</i>	<i>May</i>	<i>Jun</i>
96-97							-0.16	-0.24	-0.13	-0.28	-0.19	-0.18
97-98	-0.39	-0.36	-0.49	-0.53	-0.33	-0.38	-0.40	-0.28	-0.30	-0.20	-0.26	-0.35
98-99	-0.55	-0.60	-0.78	-0.72	-0.59	-0.60	-0.49	-0.52	-0.56	-0.54	-0.58	-0.54
99-00	-0.71	-0.81	-0.92	-0.81	-0.75	-0.78	-0.72	-0.74	-0.80	-0.77	-0.83	-0.70
00-01	-0.54	-0.50	-0.56	-0.47	-0.36	-0.40	-0.38	-0.38	-0.44	-0.38	-0.45	-0.38
01-02	-0.42	-0.39	-0.40	-0.28	-0.21	-0.15	-0.17	-0.18	-0.23	-0.21	-0.30	-0.21
02-03	-0.19	-0.19	-0.19	-0.19	-0.17	-0.09	-0.08	-0.10	-0.05	-0.05	-0.03	-0.24

Columbus

	<i>Jul</i>	<i>Aug</i>	<i>Sep</i>	<i>Oct</i>	<i>Nov</i>	<i>Dec</i>	<i>Jan</i>	<i>Feb</i>	<i>Mar</i>	<i>Apr</i>	<i>May</i>	<i>Jun</i>
93-94	-0.20	-0.21	-0.24	-0.29	-0.27	-0.17	-0.30	-0.32	-0.18	-0.20	-0.15	-0.18
94-95	-0.22	-0.26	-0.35	-0.39	-0.34	-0.26	-0.22	-0.18	-0.07	-0.10	-0.06	-0.20
95-96	-0.18	-0.25	-0.30	-0.32	-0.34		-0.14	-0.26	0.07	-0.16		
96-97							-0.13	-0.18	-0.09	-0.29	-0.20	-0.25
97-98	-0.33	-0.35	-0.36	-0.42	-0.42	-0.34	-0.31	-0.30	-0.27	-0.24	-0.28	-0.27
98-99	-0.41	-0.48	-0.66	-0.68	-0.42	-0.34	-0.29	-0.35	-0.50	-0.49	-0.49	-0.46
99-00	-0.47	-0.49	-0.62	-0.47	-0.32	-0.39	-0.40	-0.41	-0.55	-0.55	-0.62	-0.58
00-01	-0.51	-0.42	-0.59	-0.51	-0.48	-0.51	-0.45	-0.43	-0.48	-0.44	-0.47	-0.39
01-02	-0.40	-0.35	-0.38	-0.26	-0.14	-0.09	-0.08	-0.09	-0.13	-0.08	-0.15	-0.17
02-03	-0.14	-0.13	-0.11	-0.07	0.01	0.06	0.06	-0.06	-0.01	-0.12	-0.11	-0.24

Dix

	<i>Jul</i>	<i>Aug</i>	<i>Sep</i>	<i>Oct</i>	<i>Nov</i>	<i>Dec</i>	<i>Jan</i>	<i>Feb</i>	<i>Mar</i>	<i>Apr</i>	<i>May</i>	<i>Jun</i>
96-97							-0.13	-0.13	-0.04	-0.26	-0.17	-0.08
97-98	-0.32	-0.43	-0.53	-0.47	-0.43	-0.41	-0.38	-0.34	-0.34	-0.23	-0.29	-0.38
98-99	-0.55	-0.59	-0.76	-0.68	-0.55	-0.58	-0.46	-0.49	-0.53	-0.43	-0.51	-0.53
99-00	-0.73	-0.79	-0.85	-0.77	-0.72	-0.75	-0.73	-0.73	-0.78	-0.74	-0.81	-0.74
00-01	-0.63	-0.56	-0.65	-0.42	-0.31	-0.39	-0.34	-0.30	-0.32	-0.31	-0.40	-0.37
01-02	-0.43	-0.31	-0.33	-0.23	-0.17	-0.13	-0.14	-0.14	-0.17	-0.15	-0.20	-0.15
02-03	-0.12	-0.15	-0.10	-0.08	-0.06	0.04	0.06	0.09	0.10	0.09	0.10	-0.23

Duncan

	<i>Jul</i>	<i>Aug</i>	<i>Sep</i>	<i>Oct</i>	<i>Nov</i>	<i>Dec</i>	<i>Jan</i>	<i>Feb</i>	<i>Mar</i>	<i>Apr</i>	<i>May</i>	<i>Jun</i>
96-97							-0.13	-0.18	-0.09	-0.29	-0.20	-0.25
97-98	-0.33	-0.35	-0.44	-0.42	-0.42	-0.34	-0.31	-0.30	-0.27	-0.24	-0.28	-0.27
98-99	-0.41	-0.48	-0.66	-0.68	-0.42	-0.34	-0.29	-0.35	-0.50	-0.49	-0.49	-0.46
99-00	-0.47	-0.49	-0.62	-0.47	-0.32	-0.39	-0.40	-0.41	-0.55	-0.55	-0.62	-0.58
00-01	-0.51	-0.42	-0.59	-0.51	-0.48	-0.51	-0.45	-0.43	-0.48	-0.44	-0.47	-0.39
01-02	-0.40	-0.35	-0.38	-0.26	-0.14	-0.09	-0.08	-0.09	-0.13	-0.08	-0.15	-0.17
02-03	-0.14	-0.13	-0.11	-0.07	0.01	0.06	0.06	-0.06	-0.01	-0.12	-0.11	-0.24

Grand Island

	<i>Jul</i>	<i>Aug</i>	<i>Sep</i>	<i>Oct</i>	<i>Nov</i>	<i>Dec</i>	<i>Jan</i>	<i>Feb</i>	<i>Mar</i>	<i>Apr</i>	<i>May</i>	<i>Jun</i>
93-94	-0.19	-0.22	-0.22	-0.36	0.07	-0.12	-0.22	-0.30	-0.26	-0.19	-0.09	-0.21
94-95	-0.24	-0.29	-0.35	-0.36	-0.31	-0.29	-0.27	-0.29	-0.13	-0.12	-0.15	-0.35
95-96	-0.20	-0.21	-0.34	-0.27	-0.31		-0.10	-0.18	0.08	0.06	-0.11	-0.26
96-97	-0.23	-0.23	-0.24	-0.27	-0.27	0.11	-0.09	-0.14	-0.03	-0.22	-0.26	-0.15
97-98	-0.29	-0.27	-0.42	-0.41	-0.40	-0.45	-0.35	-0.20	-0.29	-0.29	-0.31	-0.30
98-99	-0.39	-0.44	-0.59	-0.50	-0.62	-0.70	-0.36	-0.34	-0.40	-0.41	-0.50	-0.53
99-00	-0.56	-0.63	-0.80	-0.78	-0.69	-0.77	-0.71	-0.66	-0.72	-0.60	-0.69	-0.55
00-01	-0.43	-0.40	-0.55	-0.41	-0.32	-0.32	-0.30	-0.28	-0.36	-0.30	-0.30	-0.28
01-02	-0.34	-0.32	-0.36	-0.31	-0.17	-0.08	-0.09	-0.04	-0.06	-0.04	-0.10	-0.10
02-03	-0.04	-0.06	0.01	-0.02	-0.02	0.07	0.08	0.07	0.02	0.01	0.00	-0.15

Holdrege

	<i>Jul</i>	<i>Aug</i>	<i>Sep</i>	<i>Oct</i>	<i>Nov</i>	<i>Dec</i>	<i>Jan</i>	<i>Feb</i>	<i>Mar</i>	<i>Apr</i>	<i>May</i>	<i>Jun</i>
96-97							-0.08	-0.14	-0.11	-0.25	-0.17	-0.24
97-98	-0.35	-0.38	-0.51	-0.52	-0.51	-0.42	-0.22	-0.22	-0.37	-0.29	-0.29	-0.34
98-99	-0.44	-0.44	-0.63	-0.64	-0.50	-0.41	-0.31	-0.35	-0.44	-0.44	-0.49	-0.41
99-00	-0.47	-0.56	-0.69	-0.66	-0.56	-0.42	-0.40	-0.43	-0.50	-0.43	-0.49	-0.41
00-01	-0.38	-0.35	-0.43	-0.35	-0.26	-0.33	-0.27	-0.26	-0.33	-0.27	-0.36	-0.28
01-02	-0.32	-0.31	-0.36	-0.35	-0.25	-0.14	-0.12	-0.09	-0.17	-0.11	-0.16	-0.13
02-03	-0.15	-0.14	-0.12	-0.11	-0.10	-0.06	-0.05	-0.02	0.05	-0.03	0.03	-0.17

Kimball

	<i>Jul</i>	<i>Aug</i>	<i>Sep</i>	<i>Oct</i>	<i>Nov</i>	<i>Dec</i>	<i>Jan</i>	<i>Feb</i>	<i>Mar</i>	<i>Apr</i>	<i>May</i>	<i>Jun</i>
96-97							-0.13	-0.13	-0.04	-0.26	-0.17	-0.08
97-98	-0.32	-0.43	-0.47	-0.48	-0.41	-0.39	-0.37	-0.34	-0.34	-0.23	-0.28	-0.34
98-99	-0.55	-0.59	-0.76	-0.68	-0.58	-0.60	-0.46	-0.49	-0.53	-0.43	-0.51	-0.53
99-00	-0.73	-0.79	-0.85	-0.77	-0.72	-0.75	-0.73	-0.73	-0.78	-0.74	-0.81	-0.74
00-01	-0.63	-0.56	-0.65	-0.42	-0.32	-0.39	-0.34	-0.30	-0.33	-0.31	-0.40	-0.37
01-02	-0.43	-0.35	-0.33	-0.23	-0.17	-0.13	-0.14	-0.14	-0.17	-0.15	-0.20	-0.13
02-03	-0.12	-0.14	-0.10	-0.08	-0.06	0.04	0.06	0.09	0.10	0.09	0.10	-0.23

Lexington

	<i>Jul</i>	<i>Aug</i>	<i>Sep</i>	<i>Oct</i>	<i>Nov</i>	<i>Dec</i>	<i>Jan</i>	<i>Feb</i>	<i>Mar</i>	<i>Apr</i>	<i>May</i>	<i>Jun</i>
93-94	-0.19	-0.15	-0.26	-0.39		-0.14	-0.26	-0.22	-0.18	-0.15	-0.11	-0.20
94-95	-0.18	-0.20	-0.27				-0.20	-0.15	-0.04	-0.11	0.01	-0.27
95-96	-0.09	-0.15	-0.23	-0.36	-0.34	-0.18	-0.08	-0.24	0.01	0.01	-0.21	-0.24
96-97	-0.07	-0.08	-0.23	-0.43	-0.47	0.04	-0.04	-0.19	-0.13	-0.24	-0.13	-0.22
97-98	-0.31	-0.35	-0.49	-0.50	-0.55	-0.44	-0.15	-0.14	-0.20	-0.14	-0.19	-0.23
98-99	-0.33	-0.45	-0.67	-0.72	-0.44	-0.22	-0.25	-0.26	-0.39	-0.37	-0.33	-0.26
99-00	-0.44	-0.55	-0.68	-0.80	-0.30	-0.41	-0.41	-0.43	-0.59	-0.47	-0.55	-0.41
00-01	-0.31	-0.38	-0.55	-0.39	-0.21	-0.19	-0.23	-0.21	-0.29	-0.22	-0.31	-0.17
01-02	-0.26	-0.23	-0.34	-0.30	-0.19	-0.15	-0.12	-0.10	-0.17	-0.12	-0.19	-0.11
02-03	-0.15	-0.12	-0.10	-0.10	-0.07	-0.02	0.05	0.05	0.10	0.14	0.23	0.04

Ogallala

	<i>Jul</i>	<i>Aug</i>	<i>Sep</i>	<i>Oct</i>	<i>Nov</i>	<i>Dec</i>	<i>Jan</i>	<i>Feb</i>	<i>Mar</i>	<i>Apr</i>	<i>May</i>	<i>Jun</i>
96-97							-0.16	-0.24	-0.13	-0.28	-0.19	-0.18
97-98	-0.39	-0.36	-0.47	-0.53	-0.33	-0.39	-0.36	-0.28	-0.33	-0.20	-0.27	-0.33
98-99	-0.55	-0.60	-0.78	-0.72	-0.59	-0.60	-0.49	-0.52	-0.56	-0.54	-0.58	-0.54
99-00	-0.71	-0.81	-0.92	-0.81	-0.75	-0.78	-0.72	-0.74	-0.80	-0.77	-0.83	-0.70
00-01	-0.54	-0.50	-0.59	-0.49	-0.36	-0.40	-0.38	-0.38	-0.44	-0.38	-0.45	-0.38
01-02	-0.42	-0.39	-0.40	-0.28	-0.21	-0.15	-0.17	-0.18	-0.23	-0.21	-0.30	-0.21
02-03	-0.19	-0.19	-0.19	-0.19	-0.17	-0.09	-0.08	-0.10	-0.05	-0.05	-0.03	-0.24

Osceola

	<i>Jul</i>	<i>Aug</i>	<i>Sep</i>	<i>Oct</i>	<i>Nov</i>	<i>Dec</i>	<i>Jan</i>	<i>Feb</i>	<i>Mar</i>	<i>Apr</i>	<i>May</i>	<i>Jun</i>
98-99							-0.29	-0.34	-0.50	-0.49	-0.49	-0.46
99-00	-0.47	-0.49	-0.62	-0.47	-0.36	-0.39	-0.40	-0.41	-0.55	-0.55	-0.62	-0.58
00-01	-0.51	-0.42	-0.59	-0.51	-0.48	-0.51	-0.45	-0.43	-0.48	-0.44	-0.47	-0.39
01-02	-0.40	-0.35	-0.38	-0.26	-0.14	-0.09	-0.08	-0.09	-0.13	-0.08	-0.15	-0.17
02-03	-0.14	-0.13	-0.11	-0.07	0.01	0.06	0.06	-0.06	-0.01	-0.12	-0.11	-0.24

Plymouth

	<i>Jul</i>	<i>Aug</i>	<i>Sep</i>	<i>Oct</i>	<i>Nov</i>	<i>Dec</i>	<i>Jan</i>	<i>Feb</i>	<i>Mar</i>	<i>Apr</i>	<i>May</i>	<i>Jun</i>
99-00	-0.54	-0.59	-0.71	-0.67	-0.50	-0.53	-0.51	-0.52	-0.58	-0.49	-0.56	-0.45
00-01	-0.29	-0.27	-0.39	-0.28	-0.19	-0.21	-0.18	-0.17	-0.21	-0.14	-0.27	-0.24
01-02	-0.29	-0.23	-0.26	-0.20	-0.10	-0.03	-0.04	-0.05	-0.09	-0.11	-0.18	-0.10
02-03	-0.10	-0.10	-0.02	-0.09	0.00	0.08	0.10	0.08	0.08	0.05	0.00	-0.21

Superior

	<i>Jul</i>	<i>Aug</i>	<i>Sep</i>	<i>Oct</i>	<i>Nov</i>	<i>Dec</i>	<i>Jan</i>	<i>Feb</i>	<i>Mar</i>	<i>Apr</i>	<i>May</i>	<i>Jun</i>
93-94	-0.24	-0.31	-0.33	-0.37	-0.35	-0.22	-0.30	-0.30	-0.24	-0.21	-0.16	-0.25
94-95	-0.28	-0.30	-0.38	-0.34	-0.26	-0.24	-0.25	-0.25	-0.16	-0.17	-0.07	-0.24
95-96	-0.18	-0.24	-0.26	-0.22	-0.23	-0.07	-0.09	-0.15	0.15	-0.13	-0.18	-0.23
96-97	-0.15	-0.16	-0.25	-0.18	-0.09	0.09	-0.02	-0.17	-0.05	-0.22	-0.22	-0.18
97-98	-0.20	-0.19	-0.28	-0.37	-0.31	-0.16	-0.24	-0.19	-0.24	-0.16	-0.20	-0.29
98-99	-0.39	-0.38	-0.61	-0.63	-0.56	-0.44	-0.34	-0.36	-0.45	-0.45	-0.50	-0.44
99-00	-0.45	-0.51	-0.70	-0.69	-0.64	-0.61	-0.54	-0.56	-0.55	-0.51	-0.47	-0.38
00-01	-0.35	-0.35	-0.50	-0.33	-0.27	-0.34	-0.25	-0.26	-0.35	-0.30	-0.32	-0.26
01-02	-0.35	-0.35	-0.40	-0.35	-0.18	-0.10	-0.09	-0.02	-0.03	0.00	-0.11	-0.10
02-03	-0.04	-0.04	0.05	0.01	0.08	0.10	0.11	0.10	0.09	0.08	0.06	-0.14

Tarnov

	<i>Jul</i>	<i>Aug</i>	<i>Sep</i>	<i>Oct</i>	<i>Nov</i>	<i>Dec</i>	<i>Jan</i>	<i>Feb</i>	<i>Mar</i>	<i>Apr</i>	<i>May</i>	<i>Jun</i>
96-97							-0.13	-0.18	-0.09	-0.29	-0.20	-0.25
97-98	-0.33	-0.35	-0.44	-0.42	-0.42	-0.34	-0.31	-0.30	-0.27	-0.24	-0.28	-0.27
98-99	-0.41	-0.48	-0.66	-0.68	-0.43	-0.34	-0.29	-0.35	-0.50	-0.49	-0.49	-0.46
99-00	-0.47	-0.49	-0.62	-0.47	-0.32	-0.39	-0.40	-0.41	-0.55	-0.55	-0.62	-0.58
00-01	-0.51	-0.42	-0.59	-0.51	-0.48	-0.51	-0.45	-0.43	-0.48	-0.44	-0.47	-0.39
01-02	-0.40	-0.35	-0.38	-0.26	-0.14	-0.09	-0.08	-0.09	-0.13	-0.08	-0.15	-0.17
02-03	-0.14	-0.13	-0.11	-0.07	0.01	0.06	0.06	-0.06	-0.01	-0.12	-0.11	-0.24

Waverly

	<i>Jul</i>	<i>Aug</i>	<i>Sep</i>	<i>Oct</i>	<i>Nov</i>	<i>Dec</i>	<i>Jan</i>	<i>Feb</i>	<i>Mar</i>	<i>Apr</i>	<i>May</i>	<i>Jun</i>
93-94	-0.10	-0.09	-0.13		-0.17	-0.04	-0.17	-0.21	-0.14	-0.15	-0.10	-0.15
94-95	-0.12	-0.16	-0.24	-0.26	-0.26	-0.22	-0.14	-0.13	-0.06	-0.10	-0.17	-0.23
95-96	-0.07	-0.16	-0.23	-0.22	-0.19	0.00	-0.12	-0.18	0.13	-0.11	-0.07	-0.26
96-97	-0.17	-0.18	-0.13	-0.12	-0.12	0.11	-0.02	-0.19	-0.05	-0.25	-0.24	-0.16
97-98	-0.17	-0.17	-0.25	-0.21	-0.14	-0.13	-0.12	-0.08	-0.14	-0.02	-0.15	-0.20
98-99	-0.30	-0.37	-0.58	-0.43	-0.24	-0.24	-0.19	-0.25	-0.34	-0.31	-0.39	-0.33
99-00	-0.52	-0.60	-0.69	-0.66	-0.49	-0.50	-0.48	-0.47	-0.52	-0.41	-0.48	-0.35
00-01	-0.28	-0.24	-0.32	-0.26	-0.16	-0.15	-0.14	-0.18	-0.26	-0.18	-0.26	-0.22
01-02	-0.26	-0.16	-0.24	-0.16	-0.13	-0.07	-0.06	-0.12	-0.16	-0.11	-0.15	-0.07
02-03	-0.06	-0.06	-0.04	-0.02	0.02	0.07	0.09	0.08	0.05	0.05	-0.03	-0.14

Appendix D – Sorghum Markets

Beatrice

	<i>Sep</i>	<i>Oct</i>	<i>Nov</i>	<i>Dec</i>	<i>Jan</i>	<i>Feb</i>	<i>Mar</i>	<i>Apr</i>	<i>May</i>	<i>Jun</i>	<i>Jul</i>	<i>Aug</i>
93-94	-0.43	-0.45	-0.41	-0.43	-0.42	-0.38	-0.45	-0.41	-0.37	-0.39	-0.30	-0.30
94-95	-0.39	-0.42	-0.39	-0.43	-0.30	-0.27	-0.36	-0.37	-0.38	-0.38	-0.37	-0.33
95-96	-0.39	-0.46	-0.40	-0.37	-0.32	-0.30	-0.27	-0.41	-0.45	-0.56	0.09	0.08
96-97	-0.34	-0.76	-0.59	-0.61	-0.56	-0.52	-0.54	-0.53	-0.62	-0.37	-0.26	-0.38
97-98	-0.50	-0.53	-0.56	-0.58	-0.50	-0.41	-0.44	-0.40	-0.42	-0.45	-0.47	-0.43
98-99	-0.57	-0.55	-0.49	-0.52	-0.45	-0.40	-0.46	-0.48	-0.52	-0.52	-0.57	-0.58
99-00	-0.72	-0.70	-0.59	-0.52	-0.49	-0.46	-0.51	-0.47	-0.52	-0.44	-0.46	-0.42
00-01	-0.45	-0.33	-0.28	-0.22	-0.24	-0.20	-0.24	-0.19	-0.16	-0.11	-0.23	-0.25
01-02	-0.33	-0.26	-0.24	-0.23	-0.27	-0.24	-0.27	-0.25	-0.28	-0.22	-0.21	-0.09
02-03	-0.15	-0.02	0.05	0.09	0.06	0.03	-0.08	-0.12	-0.25	-0.39	-0.32	-0.24

Grand Island

	<i>Sep</i>	<i>Oct</i>	<i>Nov</i>	<i>Dec</i>	<i>Jan</i>	<i>Feb</i>	<i>Mar</i>	<i>Apr</i>	<i>May</i>	<i>Jun</i>	<i>Jul</i>	<i>Aug</i>
96-97					-0.53	-0.50	-0.51	-0.51	-0.49	-0.31	-0.25	-0.38
97-98	-0.50	-0.49	-0.49	-0.51	-0.41	-0.38	-0.39	-0.39	-0.39	-0.36	-0.47	-0.35
98-99	-0.50	-0.50	-0.42	-0.49	-0.43	-0.37	-0.42	-0.42	-0.40	-0.39	-0.45	-0.56
99-00	-0.62	-0.54	-0.45	-0.41	-0.40	-0.40	-0.43	-0.37	-0.41	-0.34	-0.43	-0.42
00-01	-0.42	-0.24	-0.21	-0.17	-0.23	-0.20	-0.23	-0.20	-0.24	-0.21	-0.31	-0.32
01-02	-0.31	-0.24	-0.19	-0.12	-0.17	-0.16	-0.16	-0.15	-0.19	-0.16	-0.23	-0.06
02-03	-0.02	0.10	0.19	0.18	0.14	0.11	-0.04	-0.11	-0.22	-0.26	-0.26	-0.21

Greenwood

	<i>Sep</i>	<i>Oct</i>	<i>Nov</i>	<i>Dec</i>	<i>Jan</i>	<i>Feb</i>	<i>Mar</i>	<i>Apr</i>	<i>May</i>	<i>Jun</i>	<i>Jul</i>	<i>Aug</i>
93-94	-0.50	-0.51	-0.44	-0.46	-0.51	-0.43	-0.47	-0.43	-0.37	-0.44	-0.32	-0.34
94-95	-0.46	-0.47	-0.44		-0.38	-0.35	-0.42	-0.41	-0.42	-0.39	-0.41	-0.39
95-96	-0.50	-0.48	-0.38	-0.38	-0.36	-0.33	-0.32	-0.48	-0.51	-0.60	0.16	-0.07
96-97	-0.58	-0.53	-0.60	-0.59	-0.56	-0.56	-0.55	-0.55	-0.45	-0.37	-0.32	-0.46
97-98	-0.52	-0.56	-0.53	-0.58	-0.47	-0.42	-0.47	-0.43	-0.44	-0.43	-0.51	-0.46
98-99	-0.60	-0.59	-0.50	-0.53	-0.47	-0.46	-0.50	-0.49	-0.54	-0.54	-0.57	-0.61
99-00	-0.73	-0.70	-0.60	-0.53	-0.50	-0.49	-0.49	-0.47	-0.53	-0.50	-0.55	-0.48
00-01	-0.50	-0.40	-0.38	-0.29	-0.29	-0.28	-0.31	-0.28	-0.24	-0.21	-0.28	-0.29
01-02	-0.35	-0.30	-0.28	-0.19	-0.24	-0.20	-0.25	-0.24	-0.28	-0.24	-0.27	-0.16
02-03	-0.14	-0.10	-0.04	-0.02	-0.02	-0.03	-0.10	-0.17	-0.27	-0.40	-0.38	-0.30

Holdrege

	<i>Sep</i>	<i>Oct</i>	<i>Nov</i>	<i>Dec</i>	<i>Jan</i>	<i>Feb</i>	<i>Mar</i>	<i>Apr</i>	<i>May</i>	<i>Jun</i>	<i>Jul</i>	<i>Aug</i>
96-97					-0.57	-0.61	-0.61	-0.60	-0.50	-0.43	-0.31	-0.50
97-98	-0.55	-0.59	-0.55	-0.63	-0.54	-0.50	-0.55	-0.50	-0.49	-0.41	-0.53	-0.50
98-99	-0.64	-0.62	-0.56	-0.58	-0.56	-0.55	-0.56	-0.56	-0.59	-0.63	-0.59	-0.72
99-00	-0.74	-0.66	-0.61	-0.64	-0.60	-0.61	-0.59	-0.53	-0.54	-0.45	-0.49	-0.50
00-01	-0.48	-0.38	-0.32	-0.25	-0.30	-0.28	-0.34	-0.33	-0.38	-0.25	-0.35	-0.38
01-02	-0.43	-0.30	-0.32	-0.21	-0.23	-0.22	-0.25	-0.20	-0.31	-0.30	-0.37	-0.23
02-03	-0.21	-0.08	0.00	0.04	0.01	0.00	-0.09	-0.14	-0.23	-0.31	-0.30	-0.33

Manley

	Sep	Oct	Nov	Dec	Jan	Feb	Mar	Apr	May	Jun	Jul	Aug
96-97					-0.56	-0.56	-0.55	-0.55	-0.45	-0.37	-0.32	-0.46
97-98	-0.52	-0.56	-0.53	-0.58	-0.49	-0.42	-0.47	-0.43	-0.44	-0.43	-0.51	-0.46
98-99	-0.60	-0.59	-0.50	-0.53	-0.47	-0.46	-0.50	-0.49	-0.54	-0.54	-0.57	-0.61
99-00	-0.73	-0.70	-0.60	-0.53	-0.50	-0.49	-0.49	-0.47	-0.53	-0.50	-0.55	-0.48
00-01	-0.50	-0.40	-0.38	-0.29	-0.29	-0.28	-0.31	-0.28	-0.24	-0.21	-0.28	-0.29
01-02	-0.35	-0.30	-0.28	-0.19	-0.25	-0.21	-0.25	-0.24	-0.31	-0.30	-0.37	-0.23
02-03	-0.21	-0.09	-0.04	-0.03	-0.02	-0.03	-0.10	-0.17	-0.27	-0.40	-0.38	-0.30

Murdock

	Sep	Oct	Nov	Dec	Jan	Feb	Mar	Apr	May	Jun	Jul	Aug
96-97					-0.56	-0.56	-0.55	-0.55	-0.45	-0.37	-0.32	-0.46
97-98	-0.52	-0.56	-0.53	-0.58	-0.49	-0.42	-0.47	-0.43	-0.44	-0.43	-0.51	-0.46
98-99	-0.55	-0.59	-0.50	-0.53	-0.47	-0.46	-0.50	-0.49	-0.54	-0.54	-0.57	-0.61
99-00	-0.73	-0.70	-0.64	-0.53	-0.50	-0.49	-0.49	-0.47	-0.53	-0.50	-0.55	-0.48
00-01	-0.50	-0.40	-0.38	-0.29	-0.29	-0.28	-0.31	-0.28	-0.24	-0.21	-0.28	-0.29
01-02	-0.35	-0.30	-0.28	-0.19	-0.24	-0.21	-0.25	-0.24	-0.28	-0.24	-0.27	-0.16
02-03	-0.14	-0.10	-0.04	-0.03	-0.02	-0.03	-0.10	-0.17	-0.27	-0.40	-0.38	-0.30

Plymouth

	Sep	Oct	Nov	Dec	Jan	Feb	Mar	Apr	May	Jun	Jul	Aug
99-00					-0.43	-0.44	-0.47	-0.44	-0.48	-0.44	-0.45	-0.39
00-01	-0.43	-0.32	-0.28	-0.20	-0.24	-0.19	-0.22	-0.17	-0.15	-0.12	-0.24	-0.22
01-02	-0.30	-0.22	-0.19	-0.15	-0.20	-0.16	-0.19	-0.18	-0.25	-0.22	-0.18	-0.08
02-03	-0.11	0.00	0.07	0.09	0.08	0.05	-0.06	-0.04	-0.22	-0.38	-0.26	-0.20

Superior

	Sep	Oct	Nov	Dec	Jan	Feb	Mar	Apr	May	Jun	Jul	Aug
93-94	-0.33	-0.33	-0.31	-0.37	-0.35	-0.31	-0.59	-0.29	-0.28	-0.32	-0.20	-0.15
94-95	-0.27	-0.27	-0.24	-0.29	-0.24	-0.24	-0.33	-0.29	-0.28	-0.25	-0.28	-0.26
95-96	-0.28	-0.27	-0.29	-0.31	-0.25	-0.24	-0.22	-0.34	-0.35	-0.46	0.23	0.04
96-97	-0.40	-0.39	-0.50	-0.46	-0.47	-0.49	-0.41	-0.44	-0.40	-0.34	-0.32	-0.38
97-98	-0.44	-0.43	-0.39	-0.44	-0.42	-0.28	-0.29	-0.25	-0.36	-0.38	-0.47	-0.49
98-99	-0.61	-0.61	-0.45	-0.41	-0.36	-0.34	-0.44	-0.46	-0.48	-0.54	-0.47	-0.60
99-00	-0.74	-0.55	-0.42	-0.42	-0.40	-0.41	-0.48	-0.49	-0.41	-0.40	-0.47	-0.42
00-01	-0.43	-0.22	-0.15	-0.13	-0.21	-0.21	-0.25	-0.20	-0.19	-0.23	-0.29	-0.32
01-02	-0.31	-0.20	-0.14	-0.10	-0.17	-0.14	-0.16	-0.14	-0.21	-0.17	-0.23	-0.03
02-03	0.00	0.09	0.25	0.19	0.14	0.09	-0.03	-0.10	-0.19	-0.30	-0.23	-0.17

Waverly

	Sep	Oct	Nov	Dec	Jan	Feb	Mar	Apr	May	Jun	Jul	Aug
93-94	-0.52	-0.53	-0.46	-0.50	-0.48	-0.42	-0.47	-0.43	-0.37	-0.45	-0.33	-0.33
94-95	-0.46	-0.47	-0.43	-0.44	-0.38	-0.35	-0.44	-0.41	-0.42	-0.39	-0.39	-0.39
95-96	-0.50	-0.46	-0.38	-0.39	-0.37	-0.33	-0.32	-0.76	-0.52	-0.61	-0.42	-0.06
96-97	-0.58	-0.53	-0.59	-0.59	-0.57	-0.55	-0.55	-0.55	-0.44	-0.37	-0.34	-0.47
97-98	-0.57	-0.55	-0.53	-0.58	-0.48	-0.42	-0.47	-0.46	-0.46	-0.42	-0.51	-0.47
98-99	-0.59	-0.57	-0.51	-0.46	-0.47	-0.45	-0.49	-0.49	-0.53	-0.53	-0.56	-0.59
99-00	-0.73	-0.71	-0.59	-0.52	-0.50	-0.49	-0.49	-0.47	-0.53	-0.50	-0.51	-0.47
00-01	-0.50	-0.40	-0.36	-0.27	-0.29	-0.28	-0.31	-0.27	-0.25	-0.24	-0.29	-0.28
01-02	-0.33	-0.28	-0.28	-0.19	-0.23	-0.20	-0.25	-0.23	-0.28	-0.24	-0.27	-0.16
02-03	-0.14	-0.09	-0.01	0.00	0.06	0.01	-0.10	-0.14	-0.29	-0.38	-0.36	-0.25

